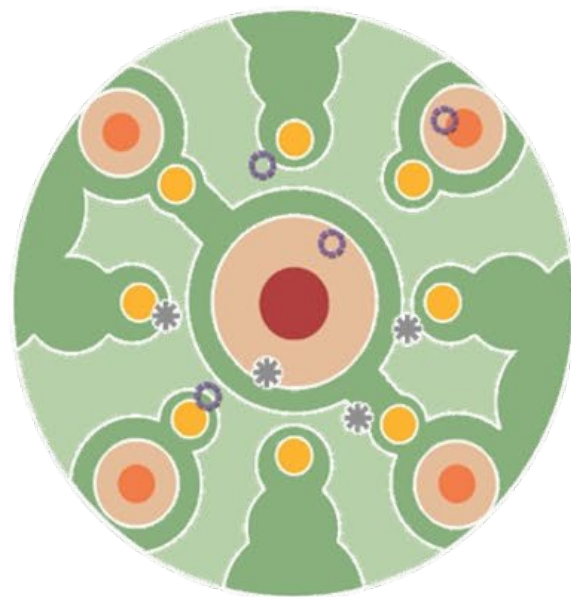


PRESERVING PORTLAND

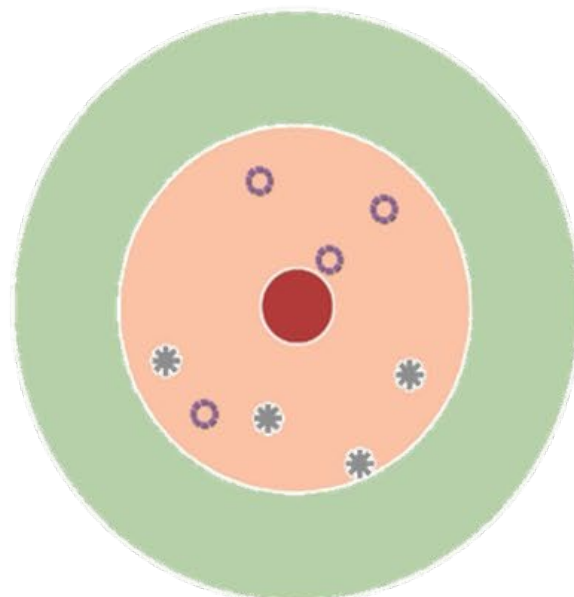


Scenario Planning Resource Guide

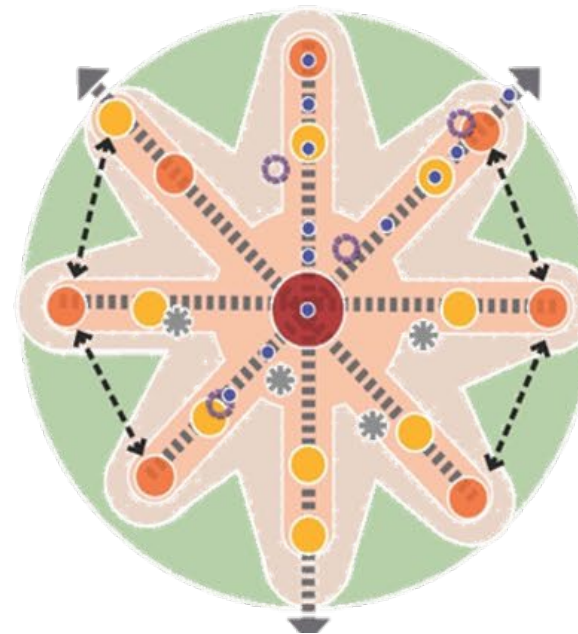
conservation



compact development



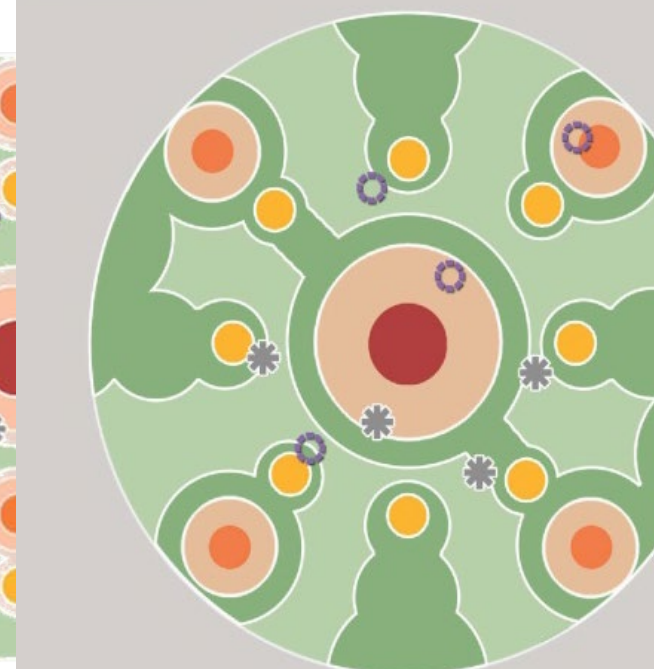
centers and corridors



centers



conservation



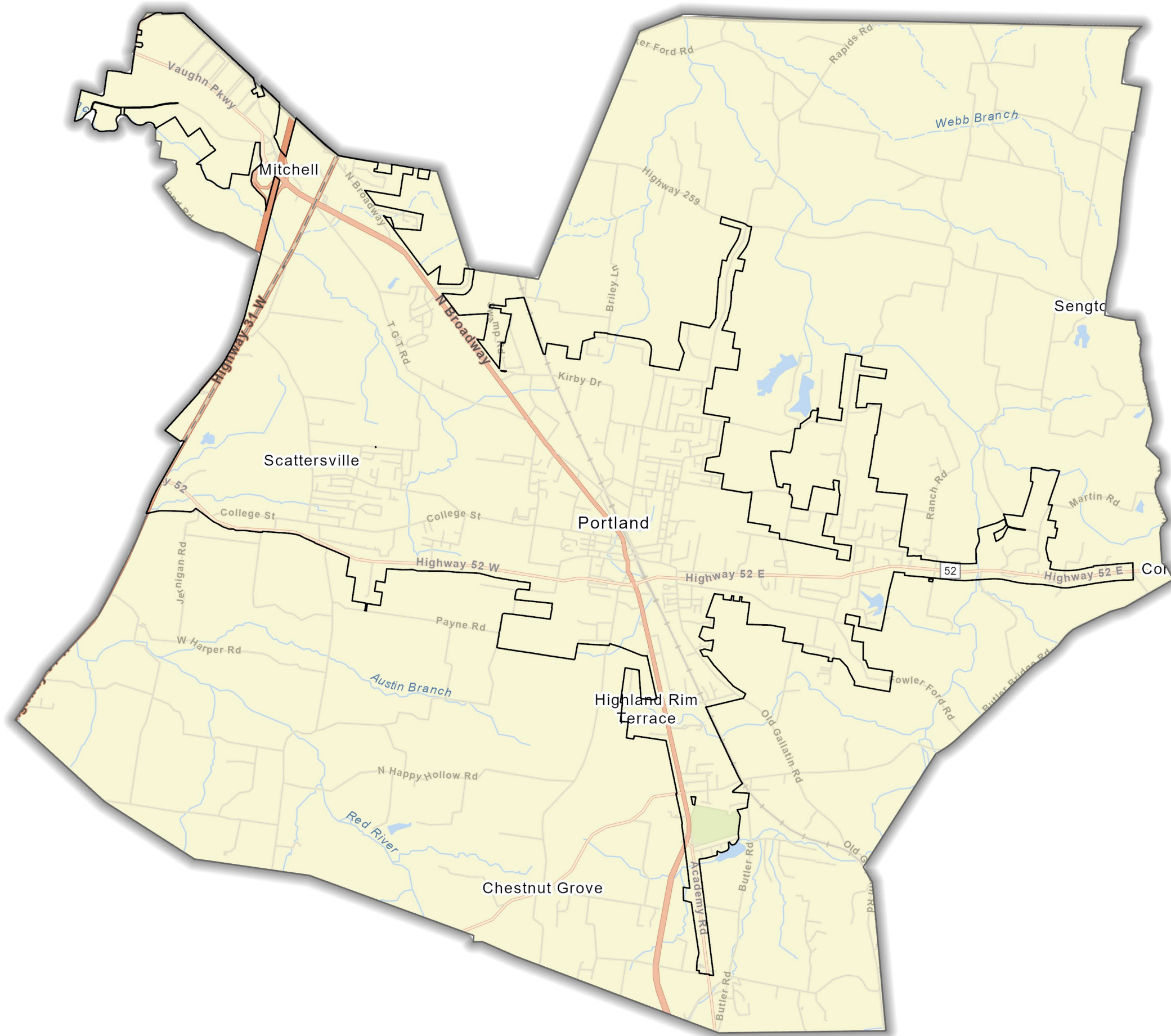
City Aerial Map



This map is provided as
a reference to help
identify cities,
topographic landmarks,
and open space.



City Street Map



This map is provided as a reference to help identify local landmarks and transportation corridors.

2020 Density Pattern by Parcel

City
13,390 Residents
12,109 Jobs

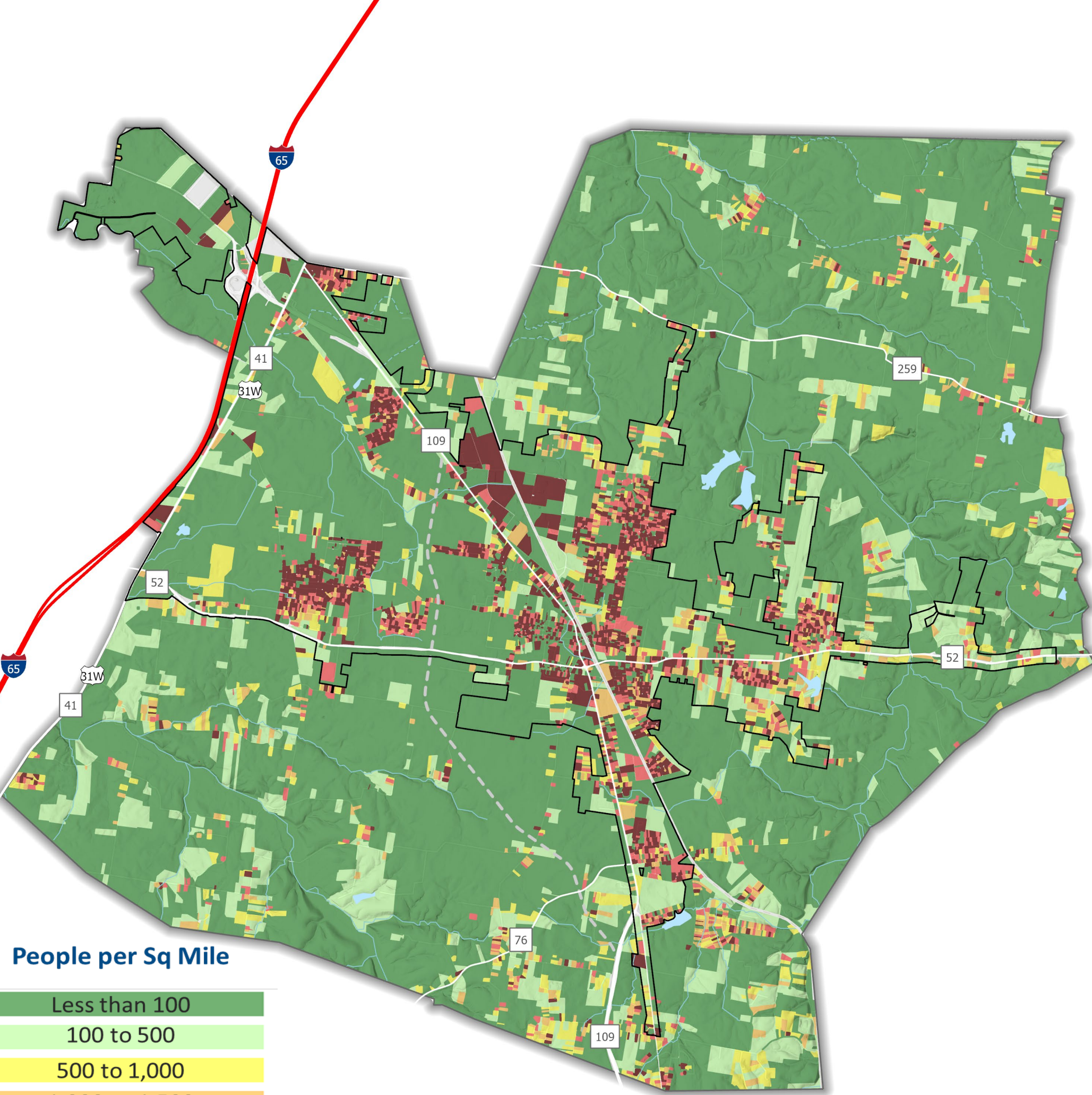
1,668 People per Sq. Mile

UGB
5,966 Residents
966 Jobs

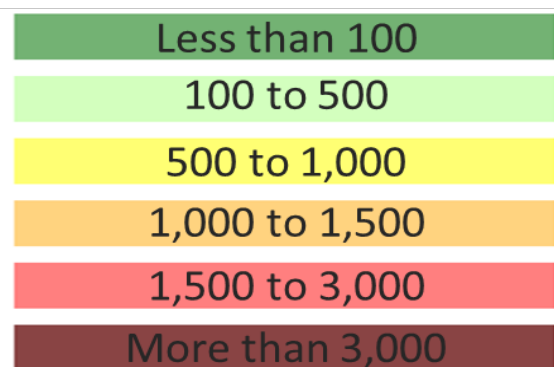
134 People per Sq. Mile

City and UGB
19,094 Residents
12,917 Jobs

477 People per Sq. Mile



People per Sq Mile



2020 Density Pattern by HEX

City
13,390 Residents
12,109 Jobs

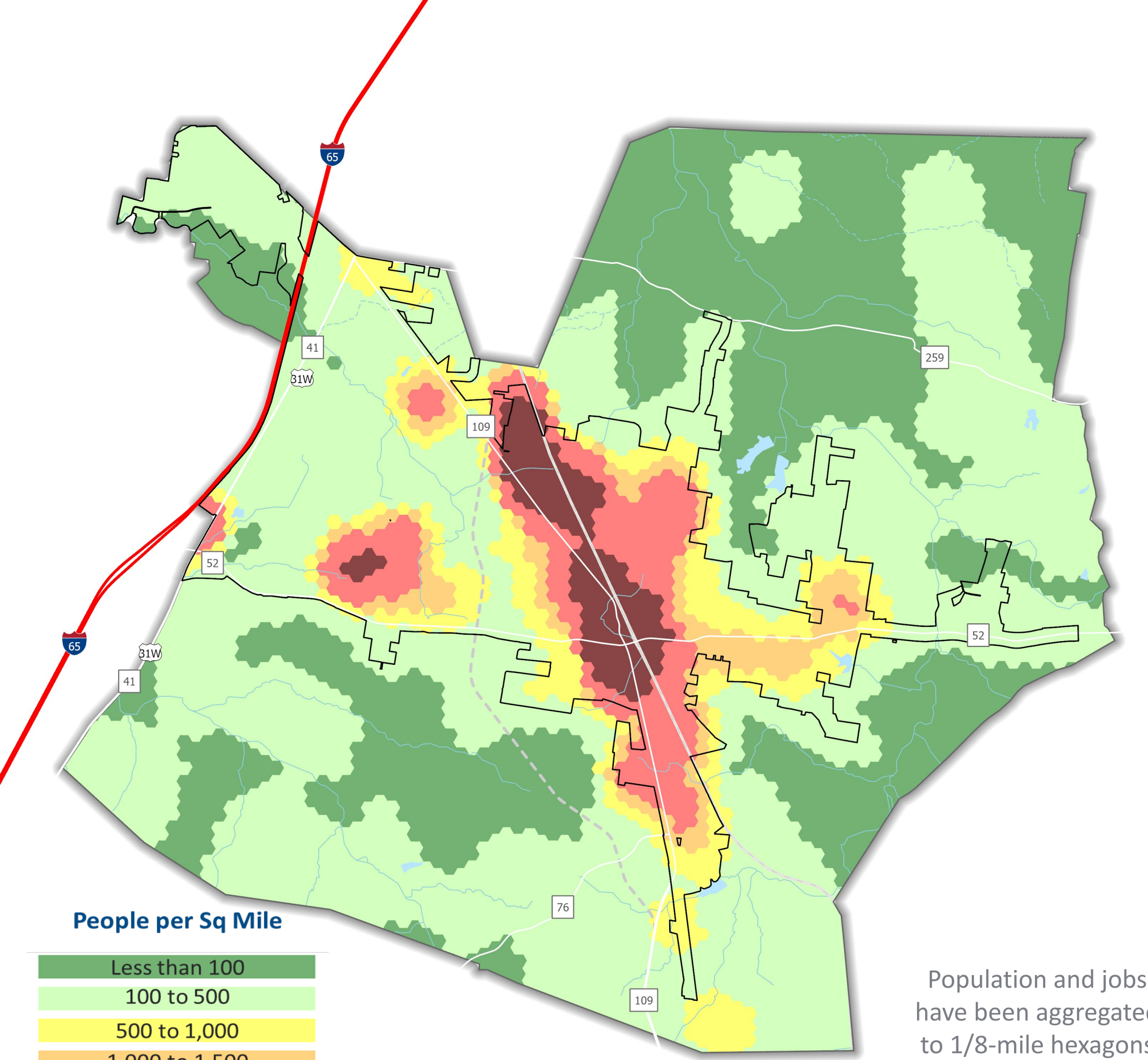
1,668 People per Sq. Mile

UGB
5,966 Residents
966 Jobs

134 People per Sq. Mile

City and UGB
19,094 Residents
12,917 Jobs

477 People per Sq. Mile



People per Sq Mile



Population and jobs have been aggregated to 1/8-mile hexagons to avoid identifying individual property lines.

Trending Growth Scenario (2045)

City

1,255 Residents

1,297 Jobs

2,552 People per Sq. Mile

UGB

305 Residents

136 Jobs

441 People per Sq. Mile

City and UGB

420 Residents

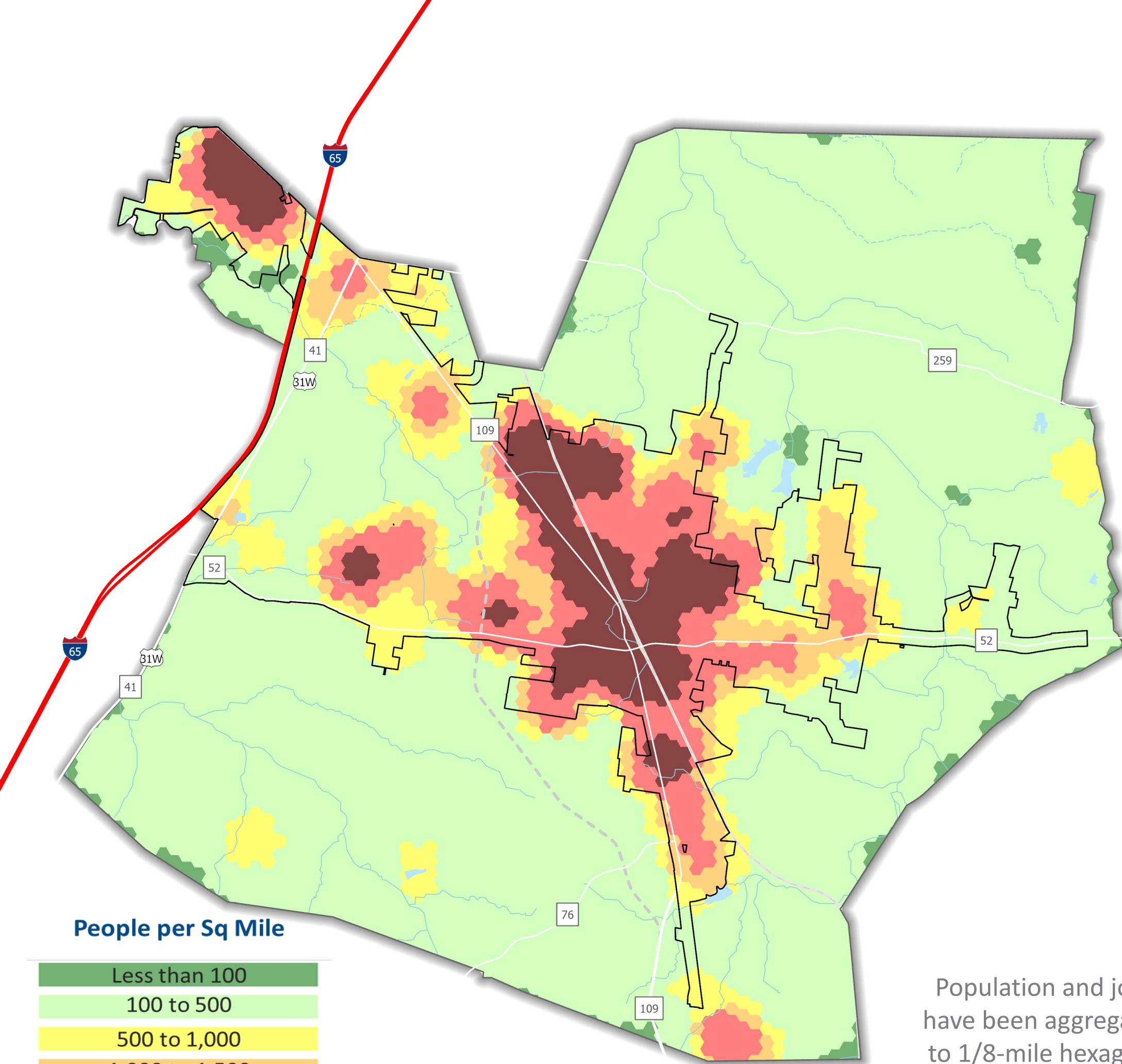
318 Jobs

738 People per Sq. Mile

People per Sq Mile



Population and jobs have been aggregated to 1/8-mile hexagons to avoid identifying individual property lines.



More Dispersed Scenario (2045)

City
1,187 Residents
1,297 Jobs

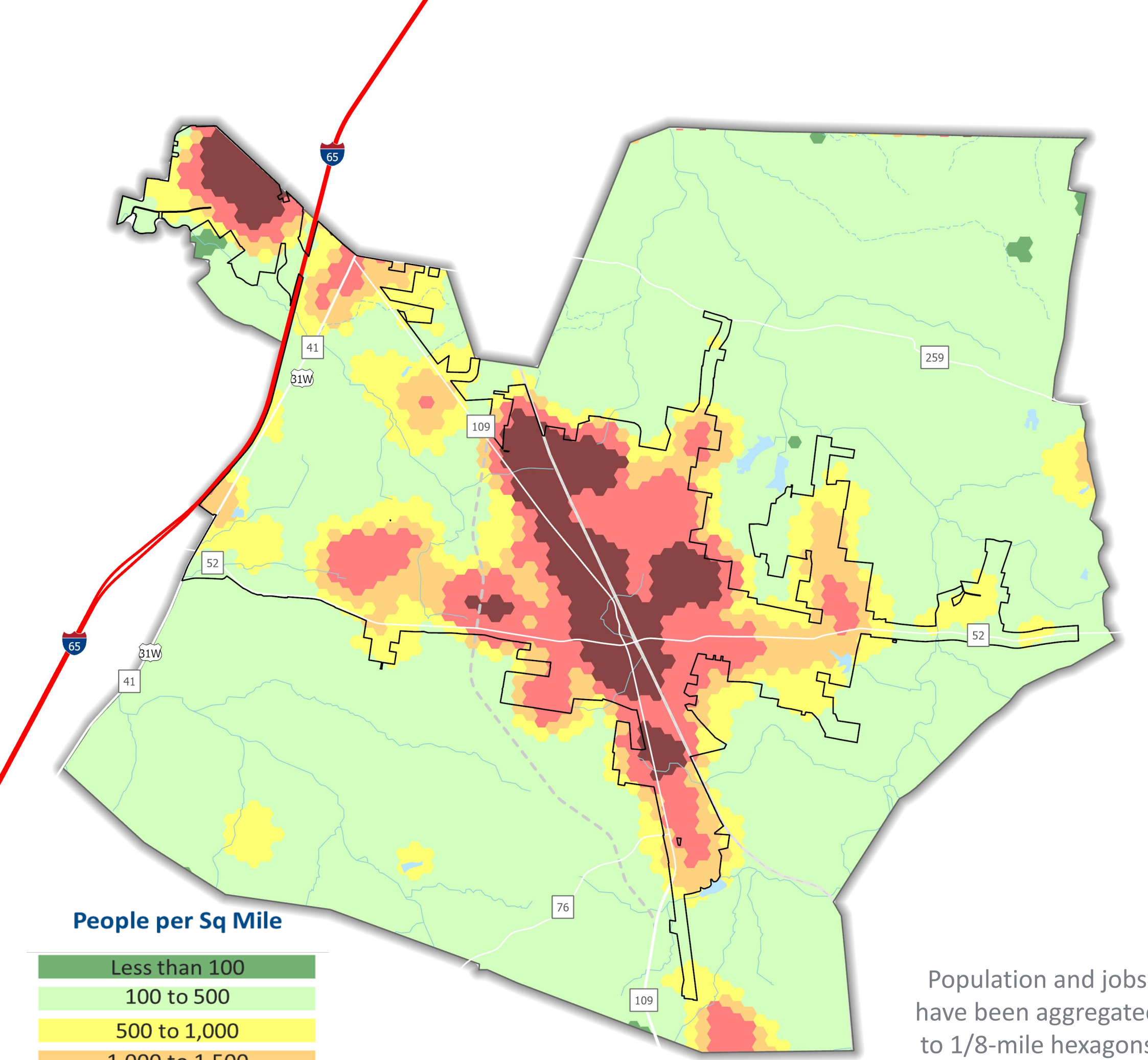
2,497 People per Sq. Mile

UGB
331 Residents
136 Jobs

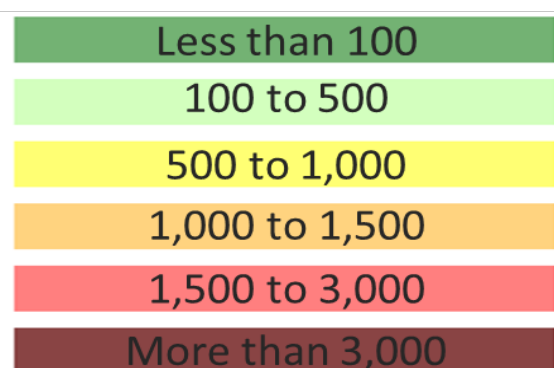
464 People per Sq. Mile

City and UGB
420 Residents
318 Jobs

738 People per Sq. Mile



People per Sq Mile



Population and jobs have been aggregated to 1/8-mile hexagons to avoid identifying individual property lines.

More Compact Scenario (2045)

City
1,470 Residents
1,240 Jobs

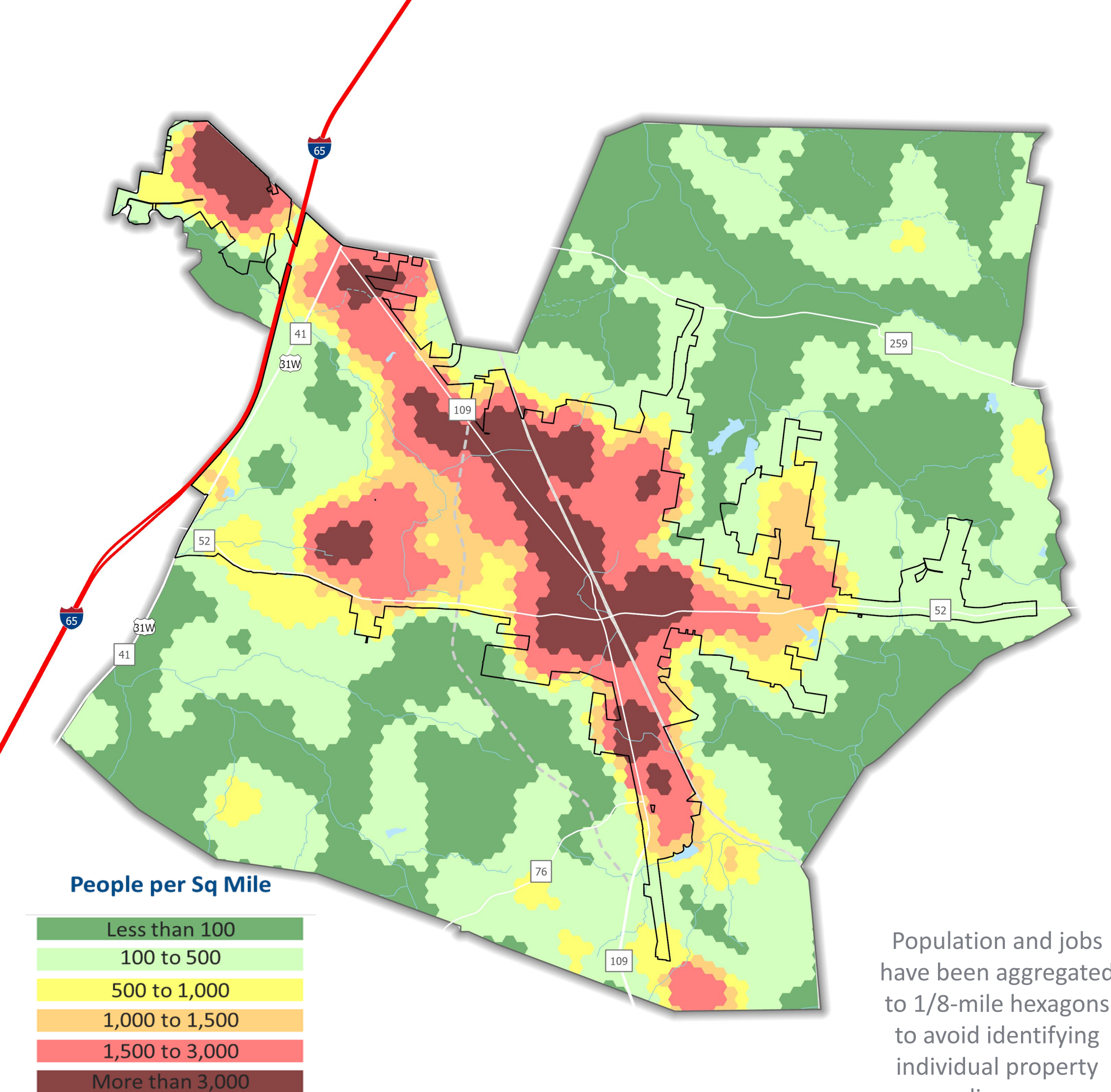
2,710 People per Sq. Mile

UGB
287 Residents
141 Jobs

428 People per Sq. Mile

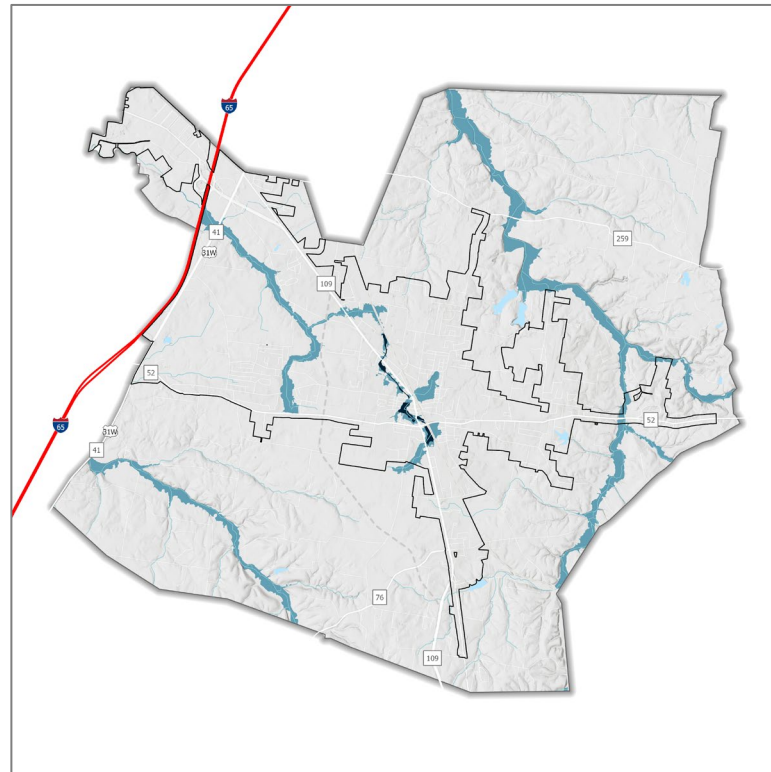
City and UGB
418 Residents
306 Jobs

724 People per Sq. Mile

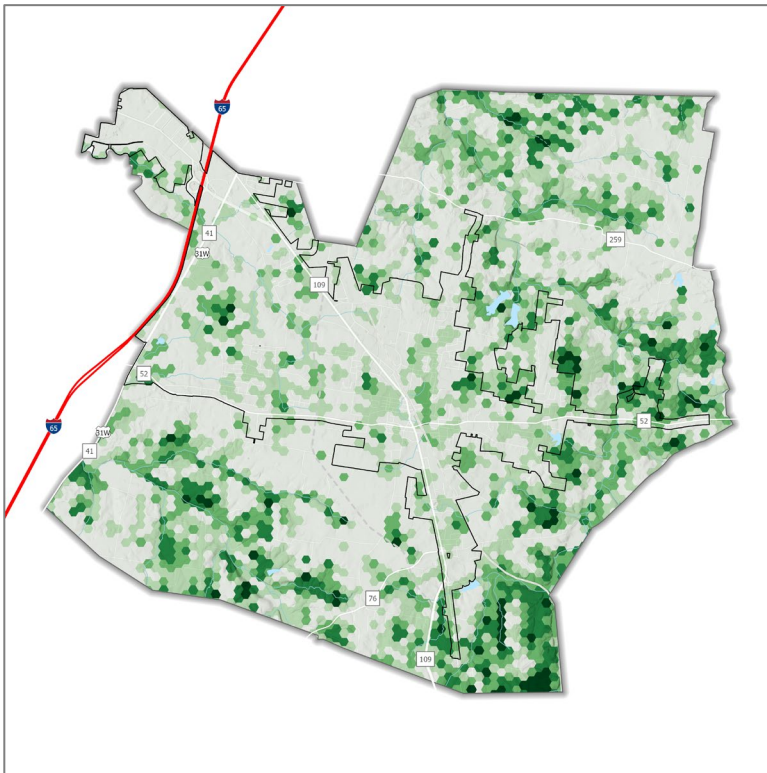


PRESERVING PORTLAND

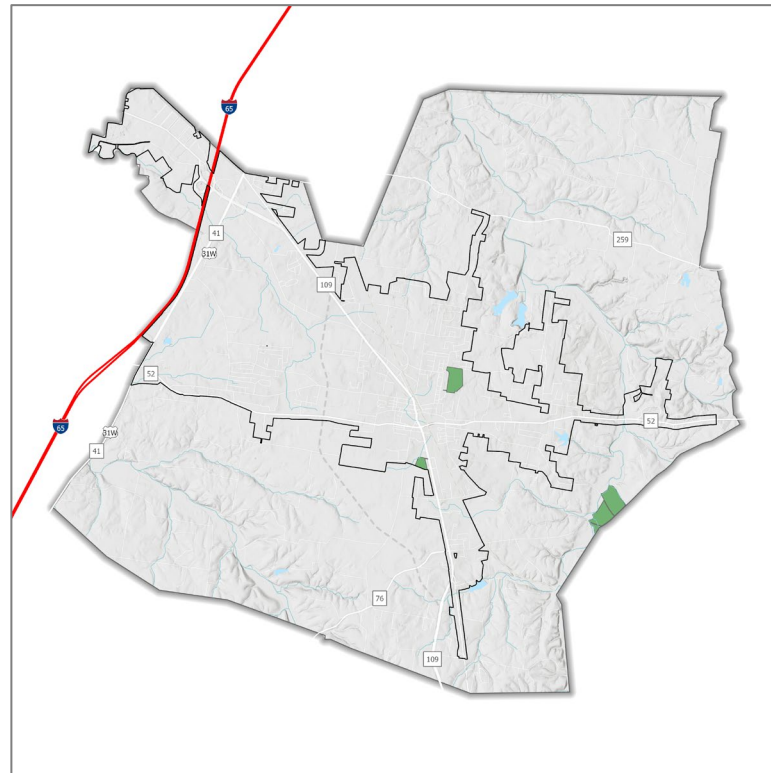
Land Use Features



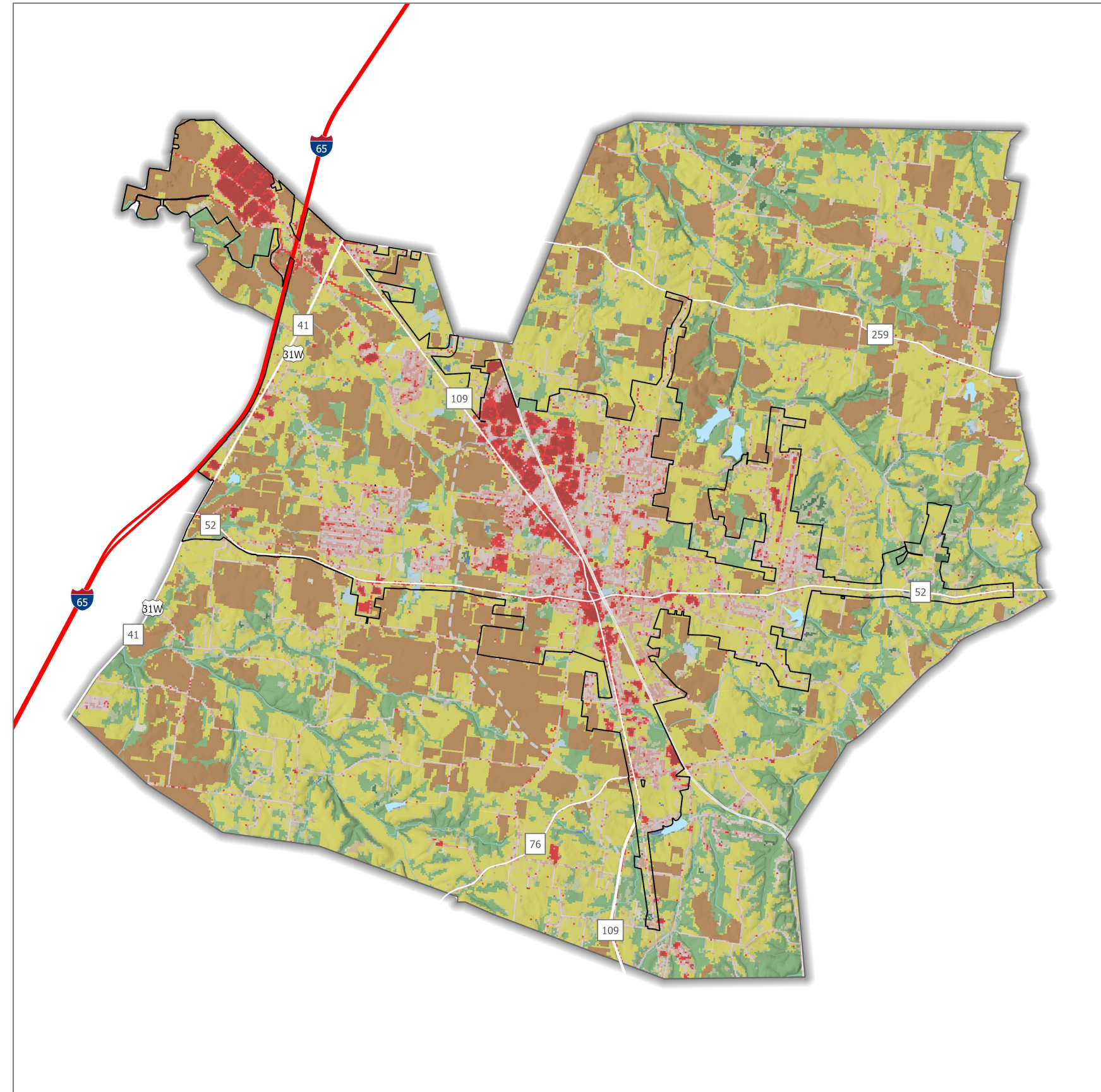
Floodplains and Floodways

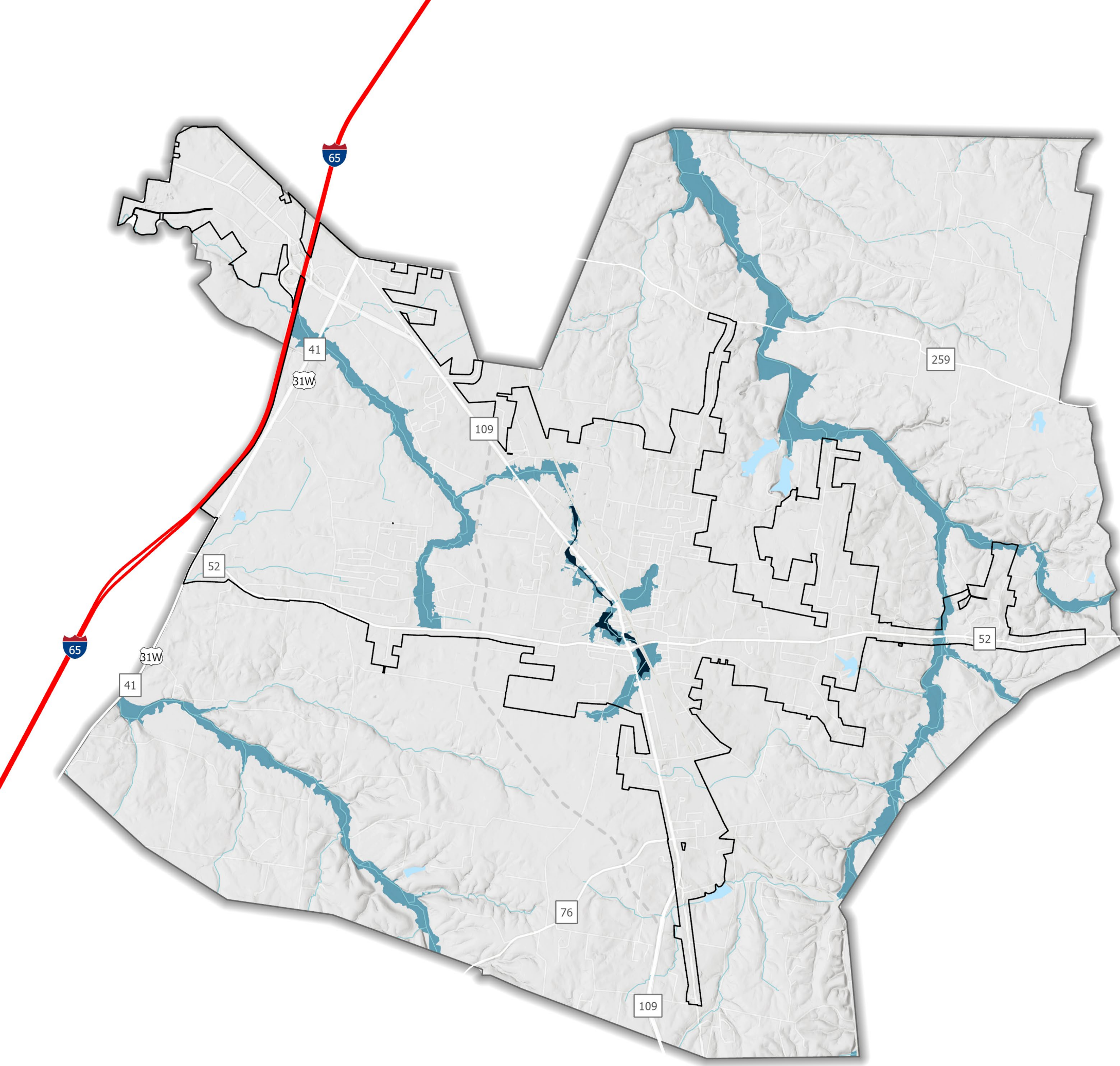


Tree Canopy Density



Protected Lands



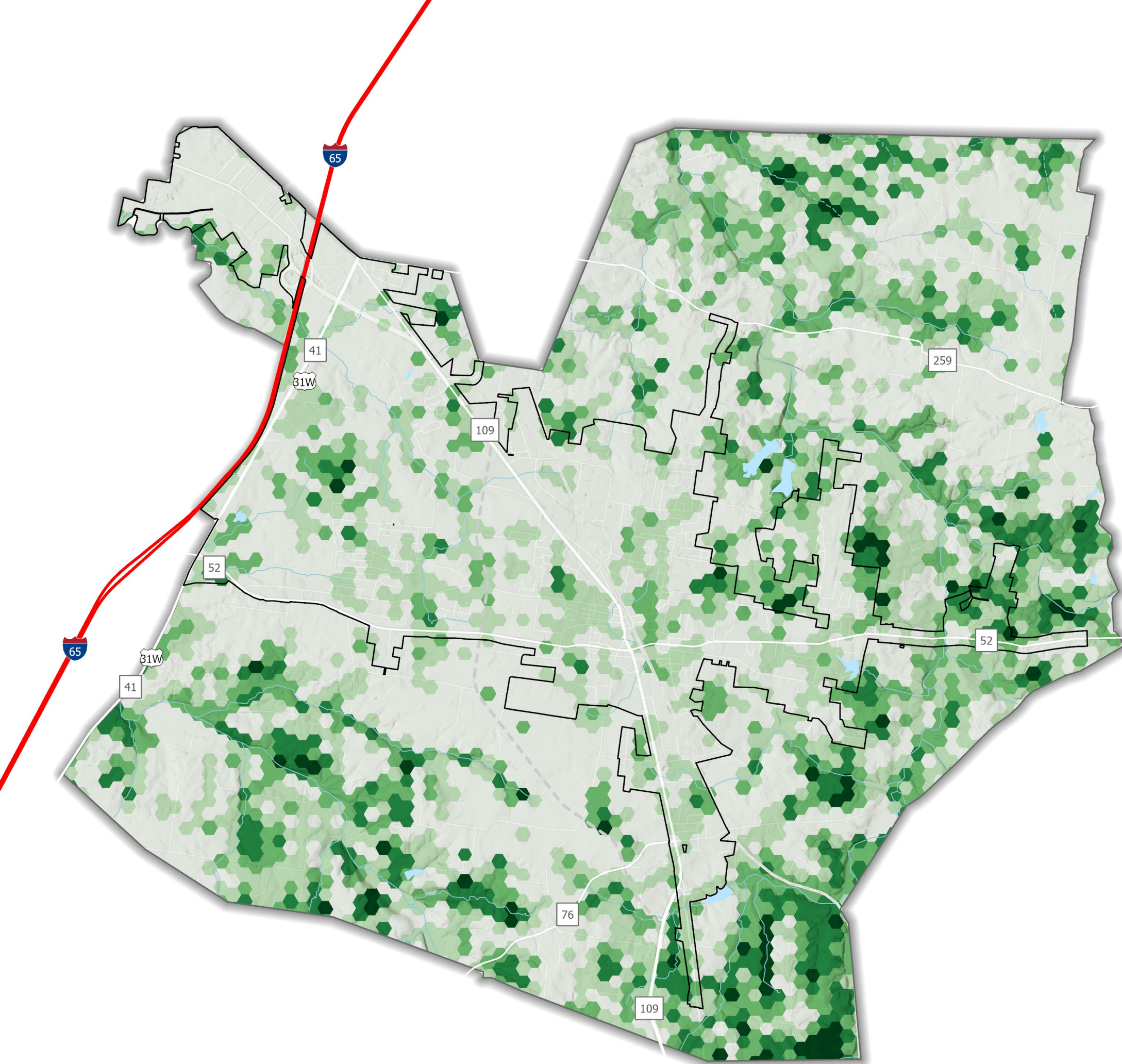


**Land Use
Features**

**Floodplains
and
Floodways**

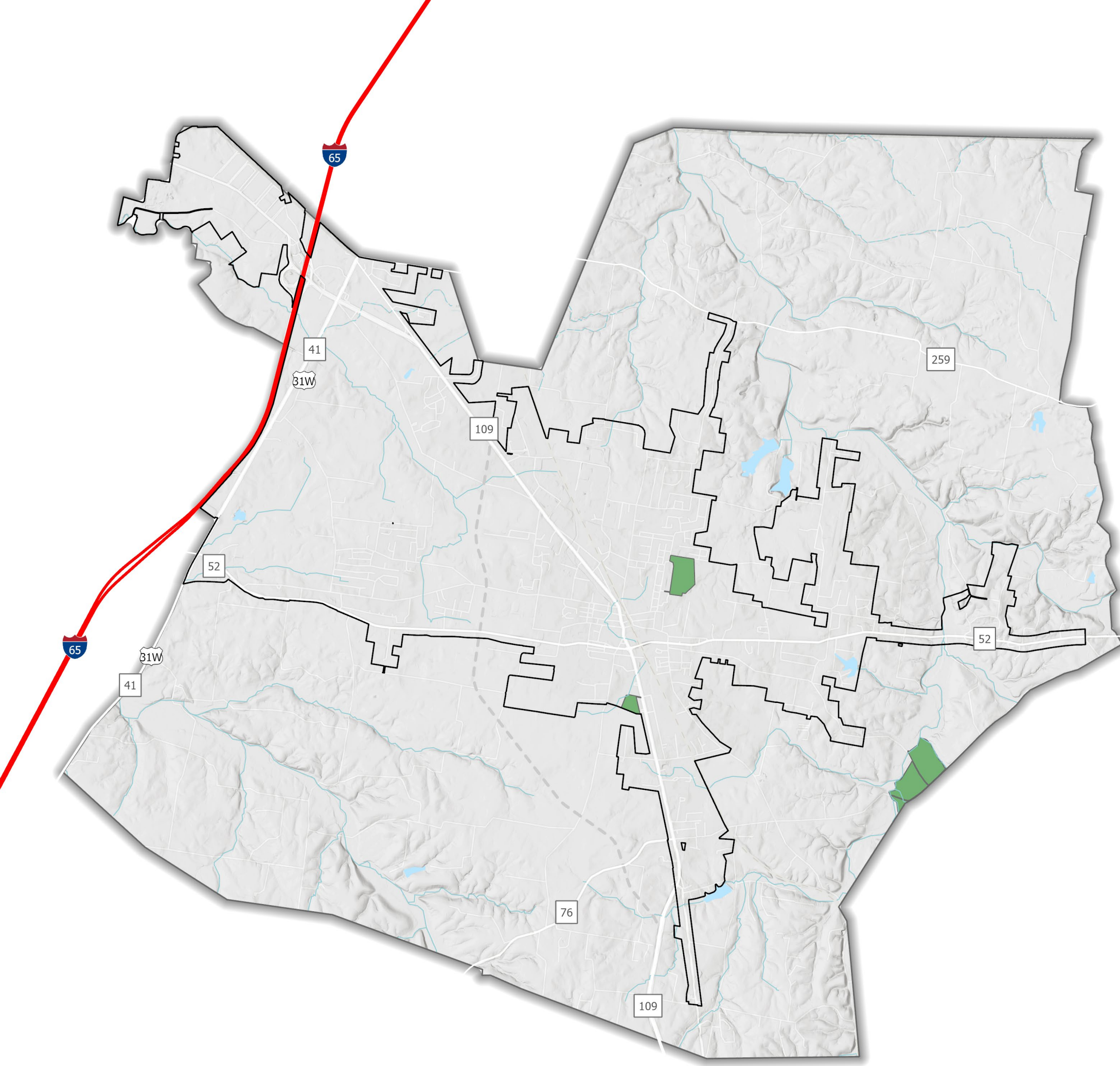
Land Use Features

Tree
canopy



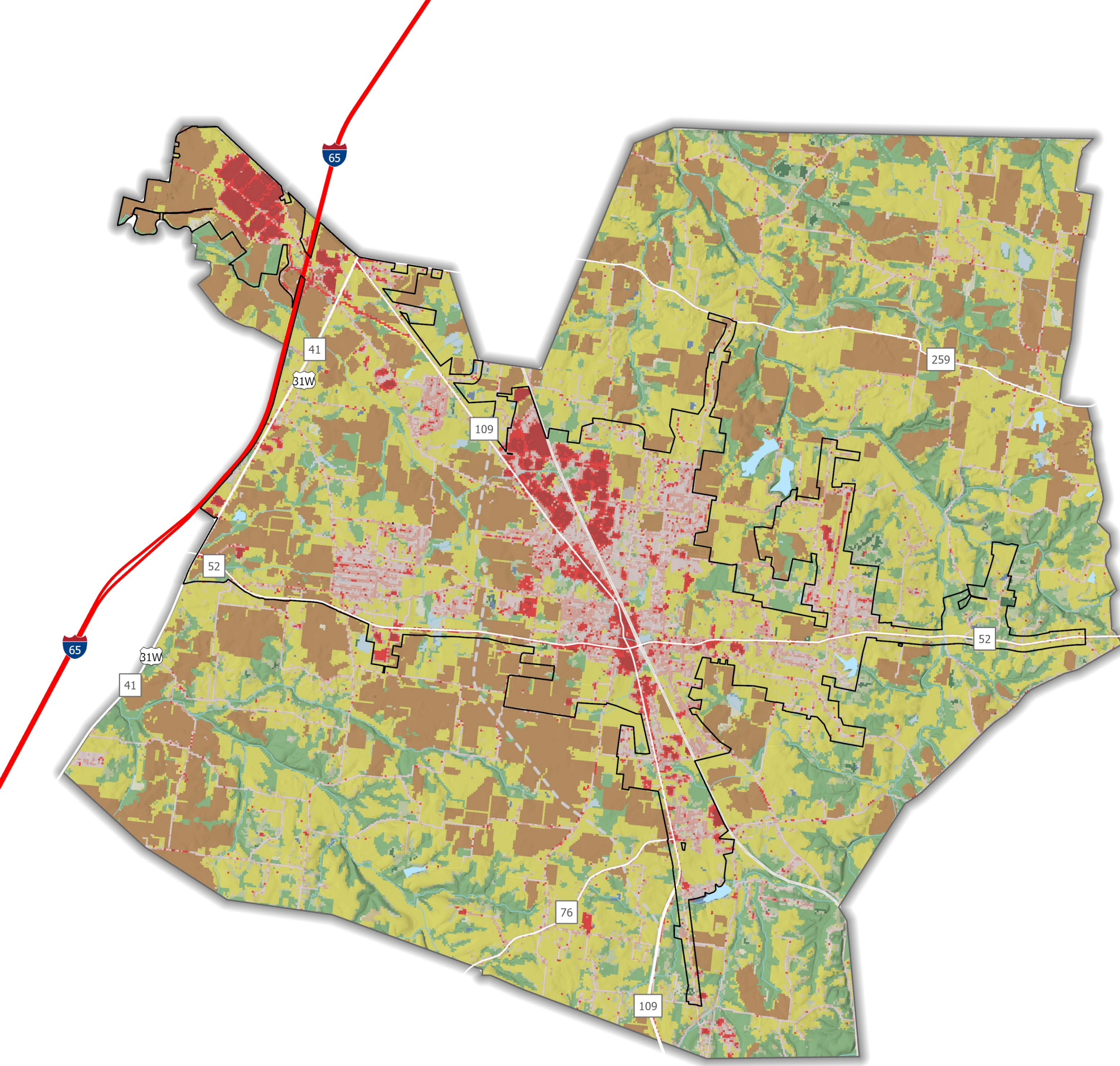
Land Use Features

**Conservation
(protected lands)**



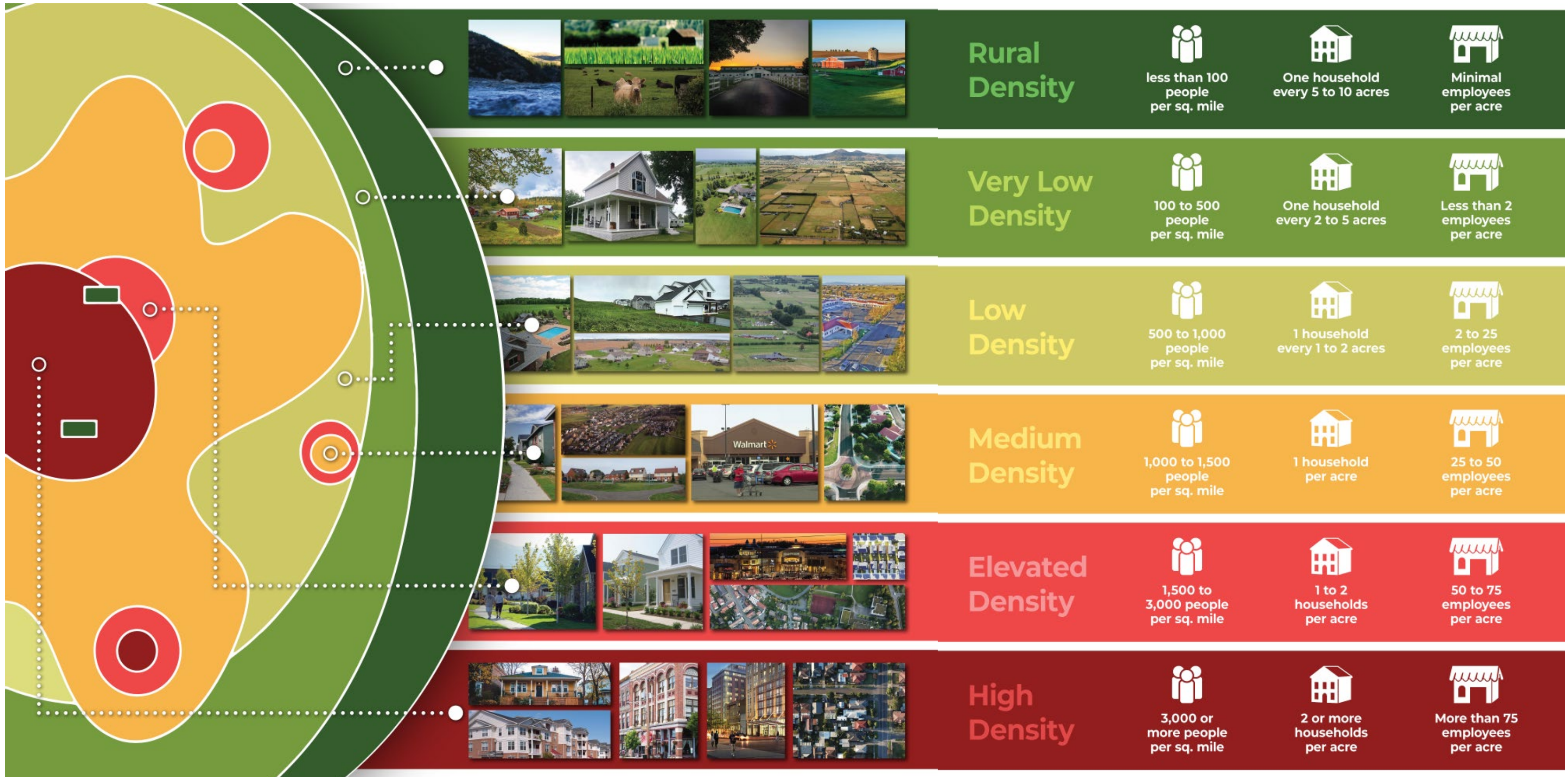
Land Use Features

NLCD



What does density look like?

Density Key



Your Preferred Scenario

Your Name:	<input type="text"/>
Your email:	<input type="text"/>

Before you Begin

1. Provide your name and email address.
2. Use the density color code to shade the map

People per Sq Mile

