

PRESERVING PORTLAND

Scenario Planning Workshop

August 20, 2024

What is Preserving Portland?

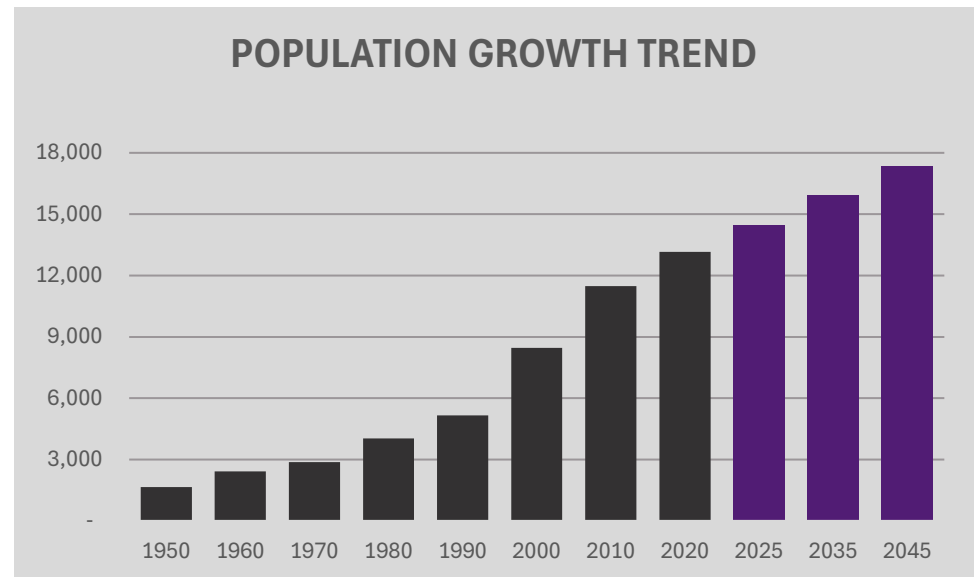
A **citywide initiative** to engage residents and businesses in defining a vision for the future...

...to develop a plan to **manage growth, guide development, and prioritize public investments** for the next two decades

Why is it Needed?

To answer questions, like...

- Where will people live?
- How will they get from home to work or to school?
- Where will people go for everyday needs?
- What will be the impact of growth on the challenges we're already experiencing?



Data Sources: U.S. Decennial Census; Woods & Poole Economics Forecasts



“

How do we ensure that the inevitability of change is leveraged as an opportunity to improve quality of life?

Planning Process

Step 1.

**Vision &
Expectations**

(Listening)

Step 2.

**What If
Scenarios**

(Brainstorming)

Step 3.

**Strategy and
Planning**

(Deciding)

Community Engagement

8

Engagement
Events

150+

Attendees

450+

Surveys



Planning Process

Step 1.

**Vision &
Expectations**

(Listening)

Step 2.

**What If
Scenarios**

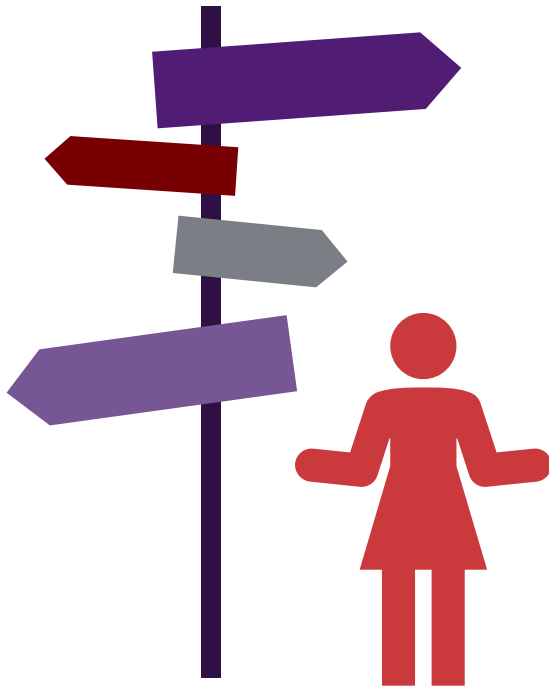
(Brainstorming)

Step 3.

**Strategy and
Planning**

(Deciding)

What if?



Scenario planning allows you to preview the impacts of different growth options on key *quality of life metrics*

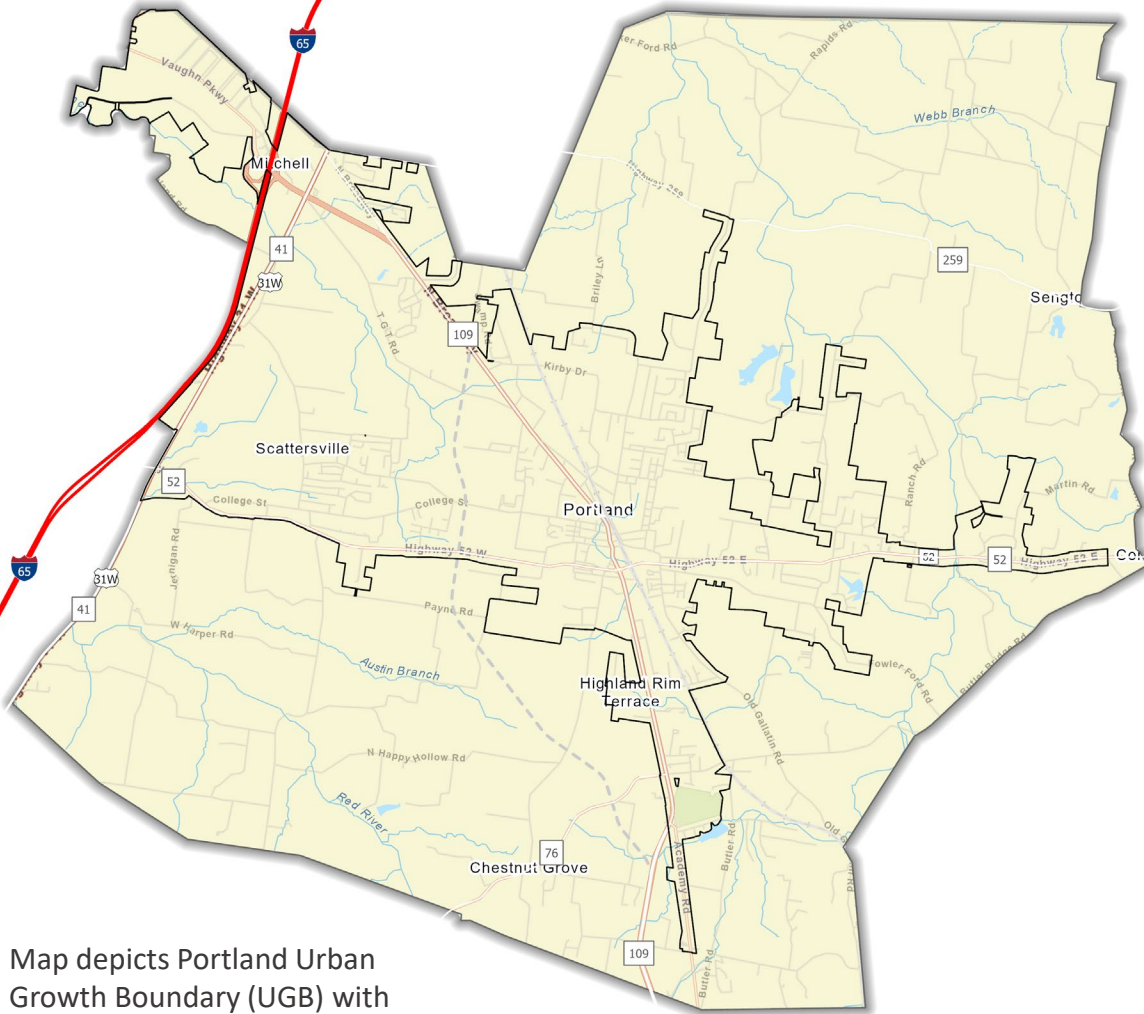
What if?

REPORT CARD	
Land Consumed	B
Traffic Congestion	C-
Walkability	D
Flood Risk	C-
Utilities	B+
Ag Land Lost	B-
Access to Parks	B

There is no perfect scenario, each will offer its own set of *trade-offs*

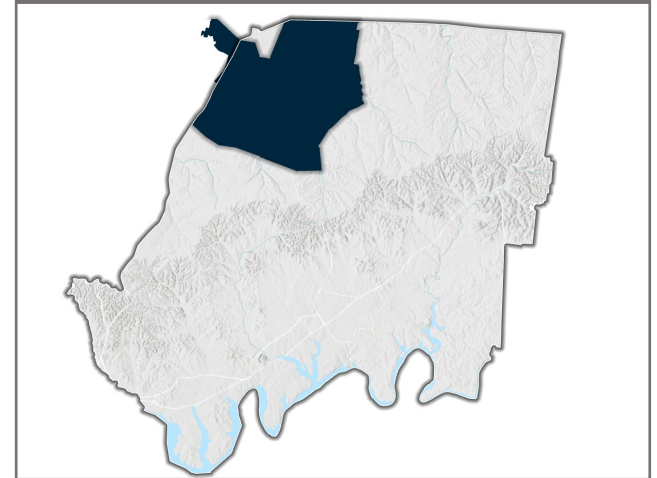
**What is our trending
scenario?**

Portland UGB



Map depicts Portland Urban Growth Boundary (UGB) with generalized municipal limits and the planned SR 109 Bypass.

Location of Portland's UGB within Sumner County



2010

People per Square Mile

19,026 Residents

6,564 Jobs

People per Sq Mile

Less than 100

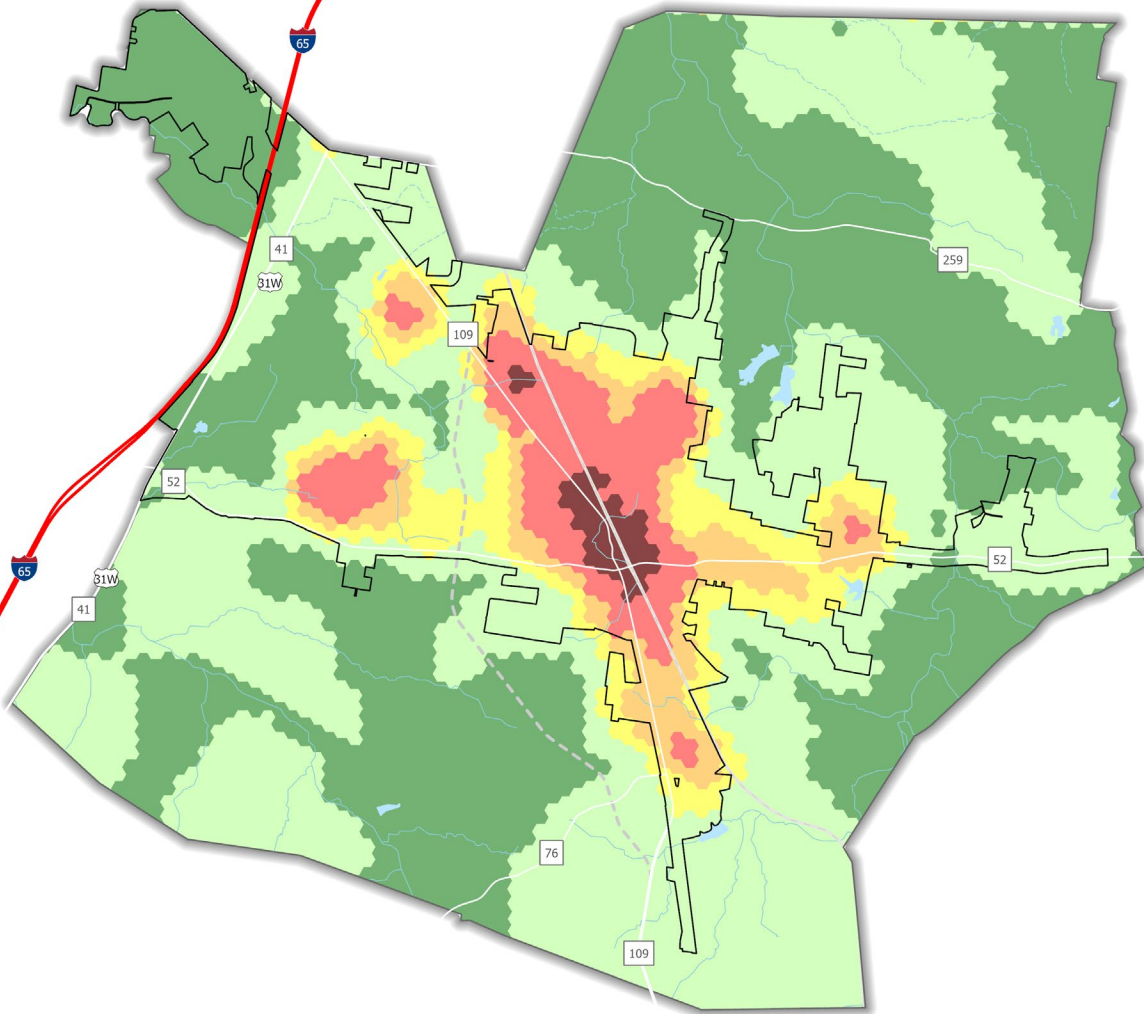
100 to 500

500 to 1,000

1,000 to 1,500

1,500 to 3,000

More than 3,000



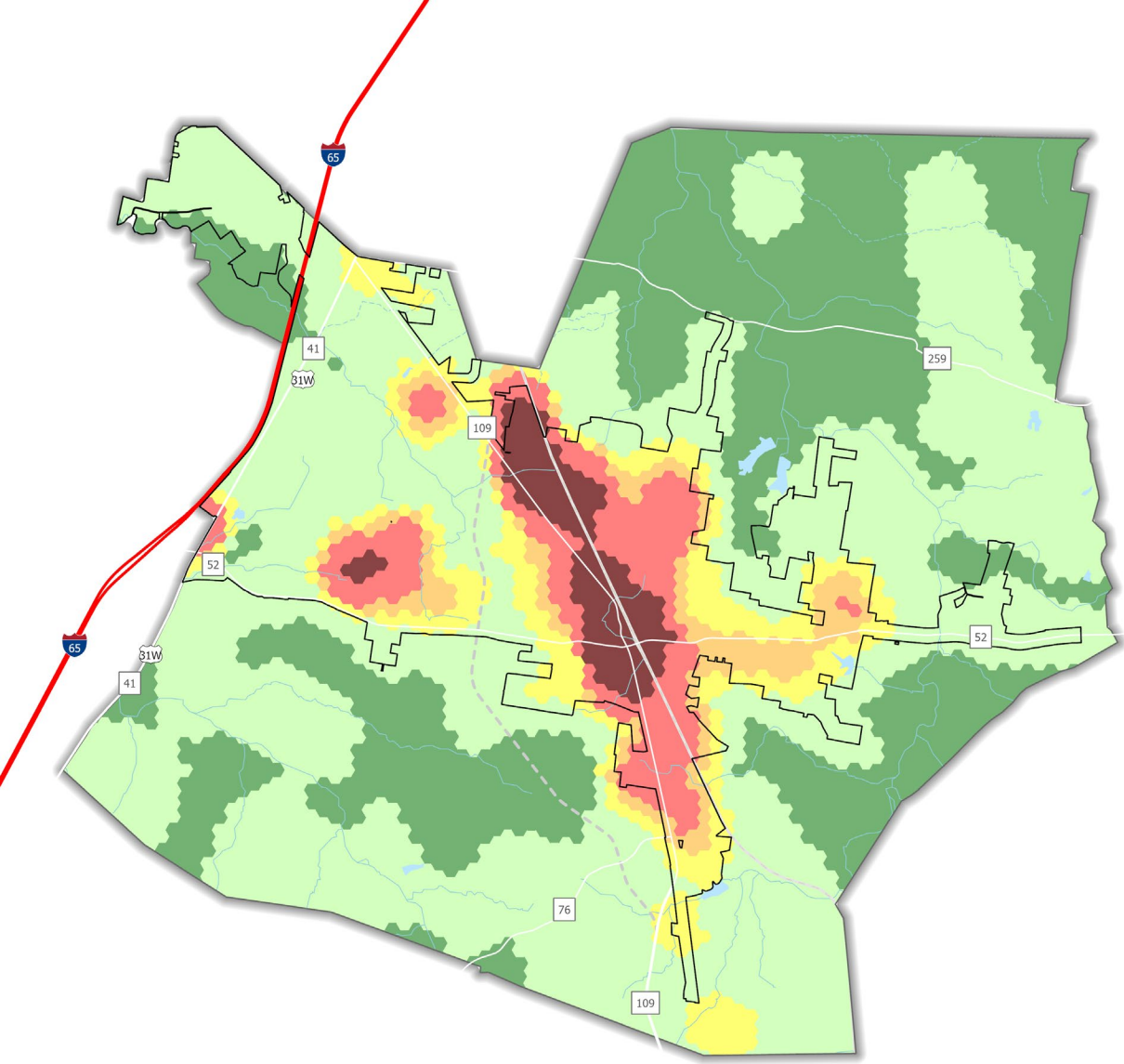
2020

People per Square Mile

19,954 Residents

14,237 Jobs

People per Sq Mile



2045

People per Square Mile

28,207 Residents

20,526 Jobs

People per Sq Mile

Less than 100

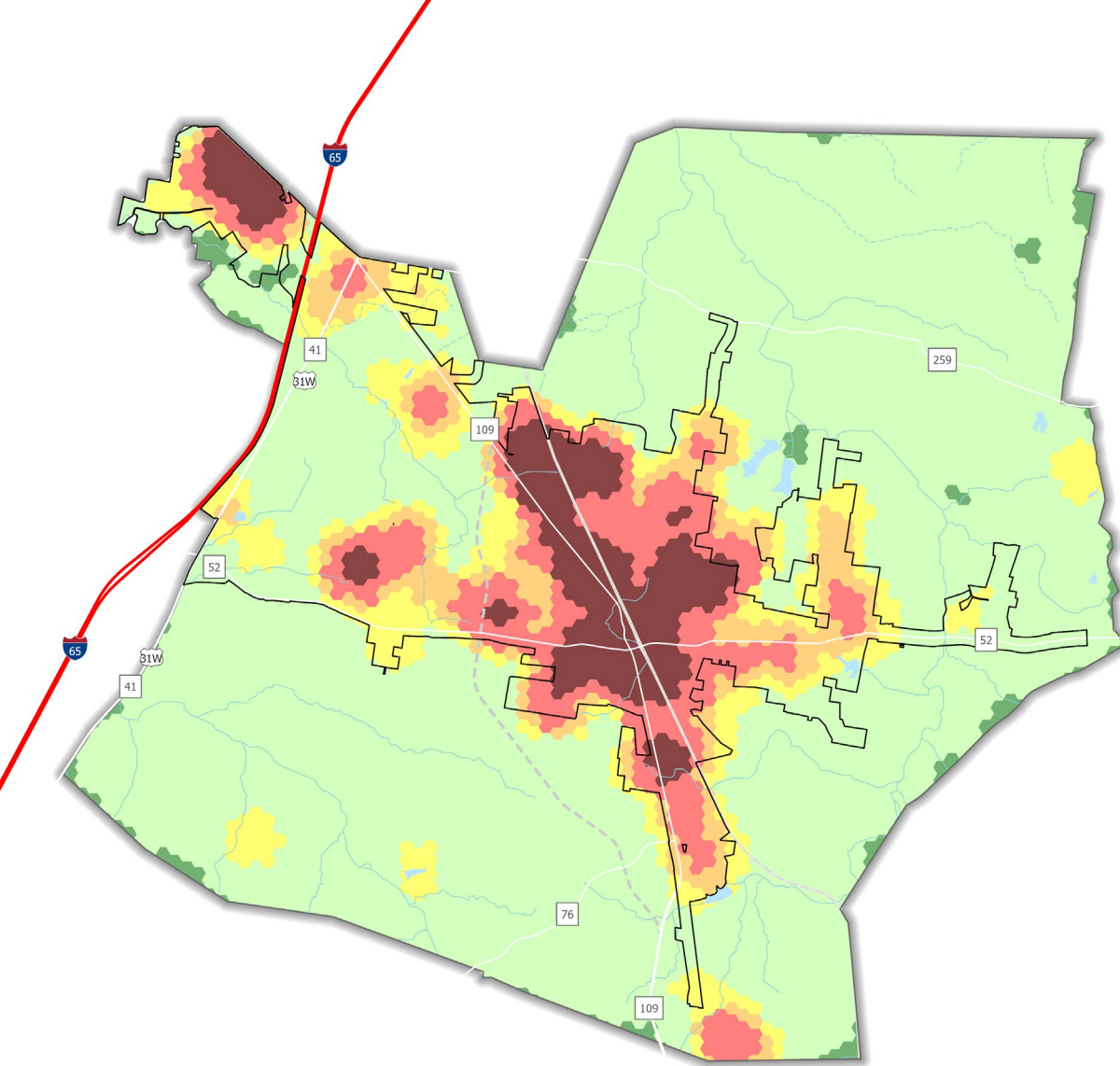
100 to 500

500 to 1,000

1,000 to 1,500

1,500 to 3,000

More than 3,000



Impacts of the Trending Scenario

Measure of Success	Trending Scenario
Roadway Demand	51% higher than today
Flooding Risks	87% higher than today
Agricultural Land	68% lost between now and then
Other Open Space	84% lost between now and then

**What if we grow in a
more dispersed way?**

2045 TRENDING

28,207 Residents

20,526 Jobs

People per Sq Mile

Less than 100

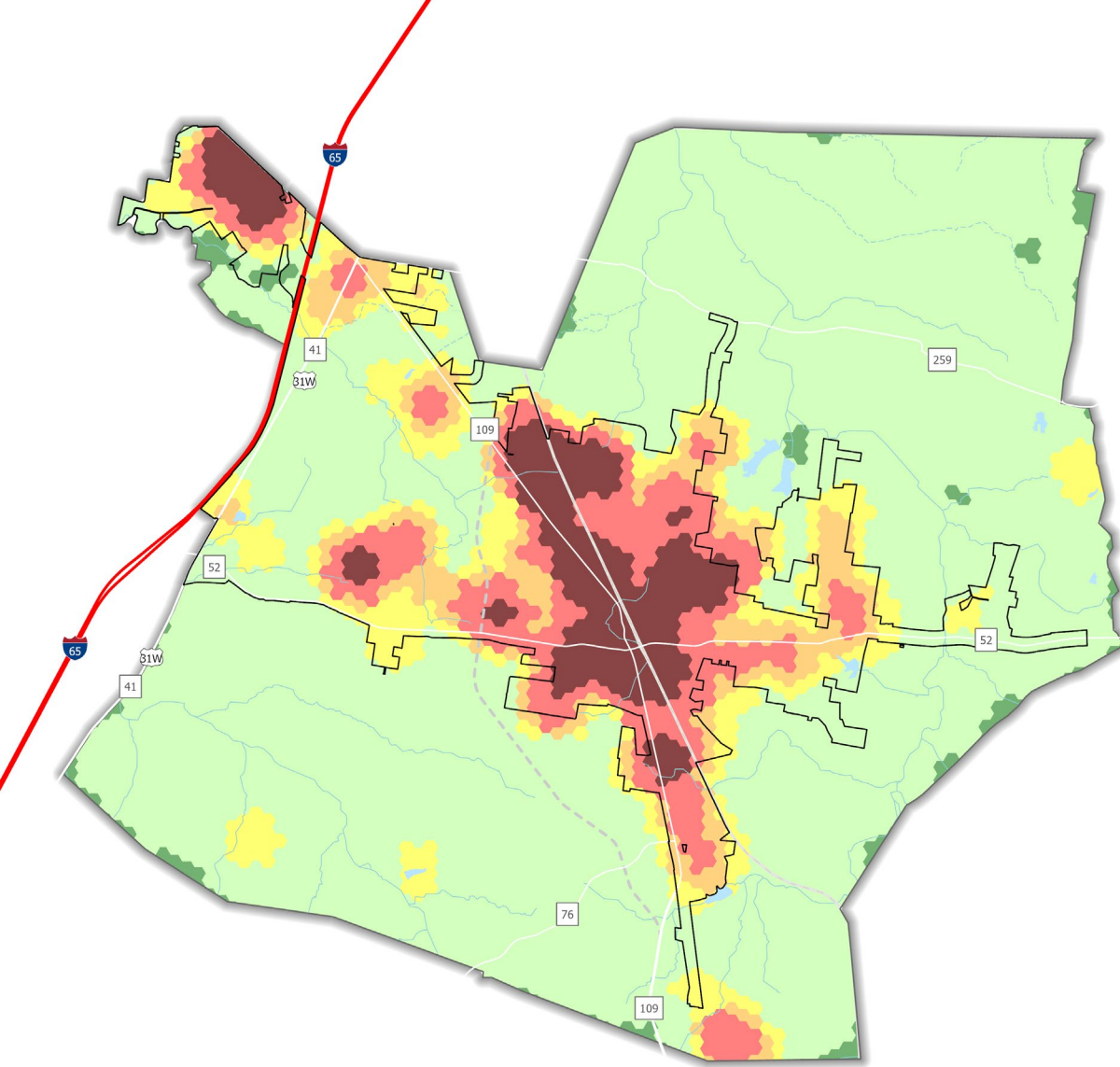
100 to 500

500 to 1,000

1,000 to 1,500

1,500 to 3,000

More than 3,000



2045 DISPERSED

28,194 Residents

21,326 Jobs

People per Sq Mile

Less than 100

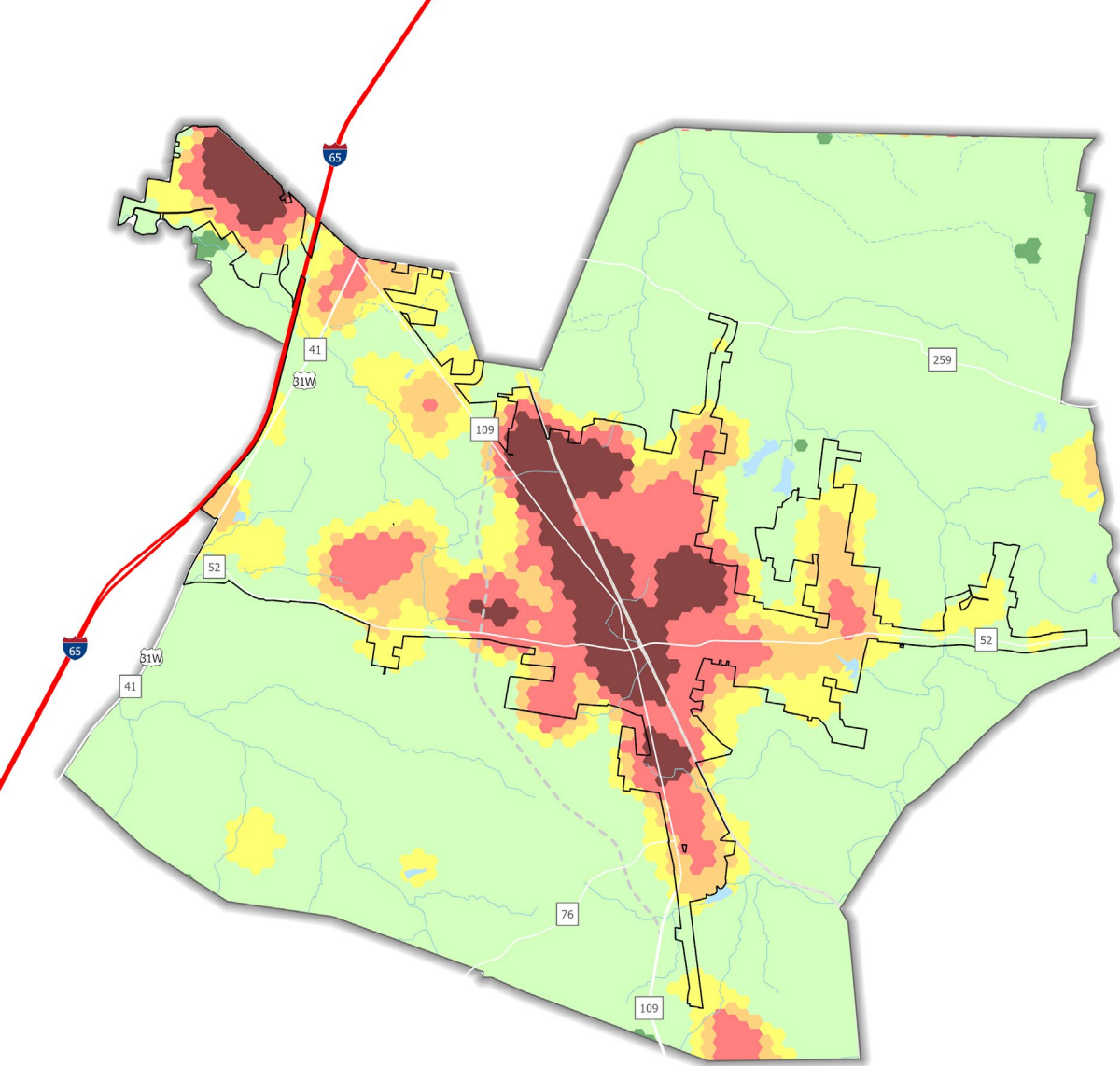
100 to 500

500 to 1,000

1,000 to 1,500

1,500 to 3,000

More than 3,000



Impacts of a More Dispersed Scenario

Measure of Success	More Dispersed Scenario
Roadway Demand	3% worse than trend
Flooding Risks	13% worse than trend
Agricultural Land	About the same as trend
Other Open Space	1% worse than trend

**What if we grow in a
more compact way?**

2045 TRENDING

28,207 Residents

20,526 Jobs

People per Sq Mile

Less than 100

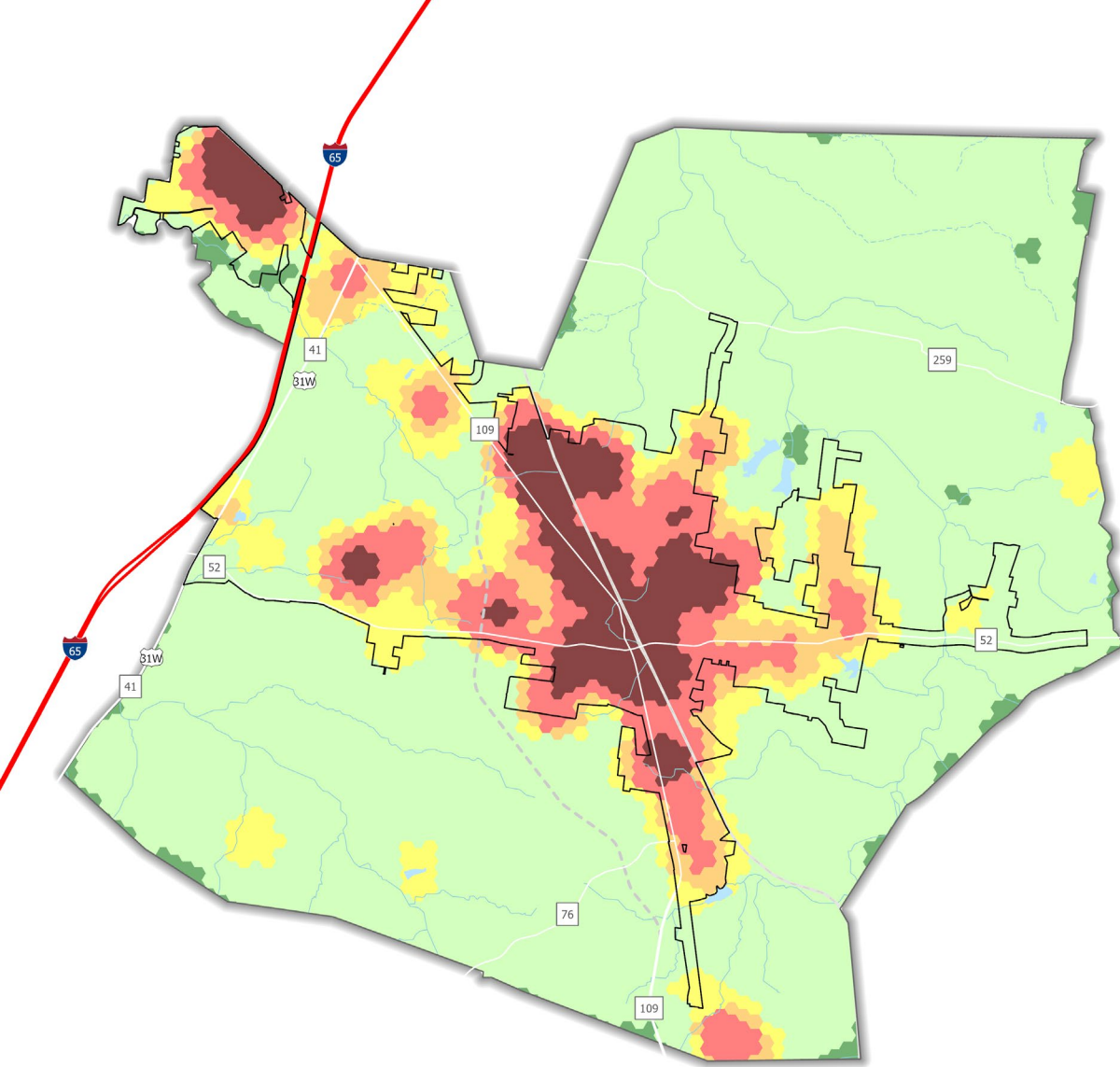
100 to 500

500 to 1,000

1,000 to 1,500

1,500 to 3,000

More than 3,000



2045 COMPACT

28,207 Residents

20,526 Jobs

People per Sq Mile

Less than 100

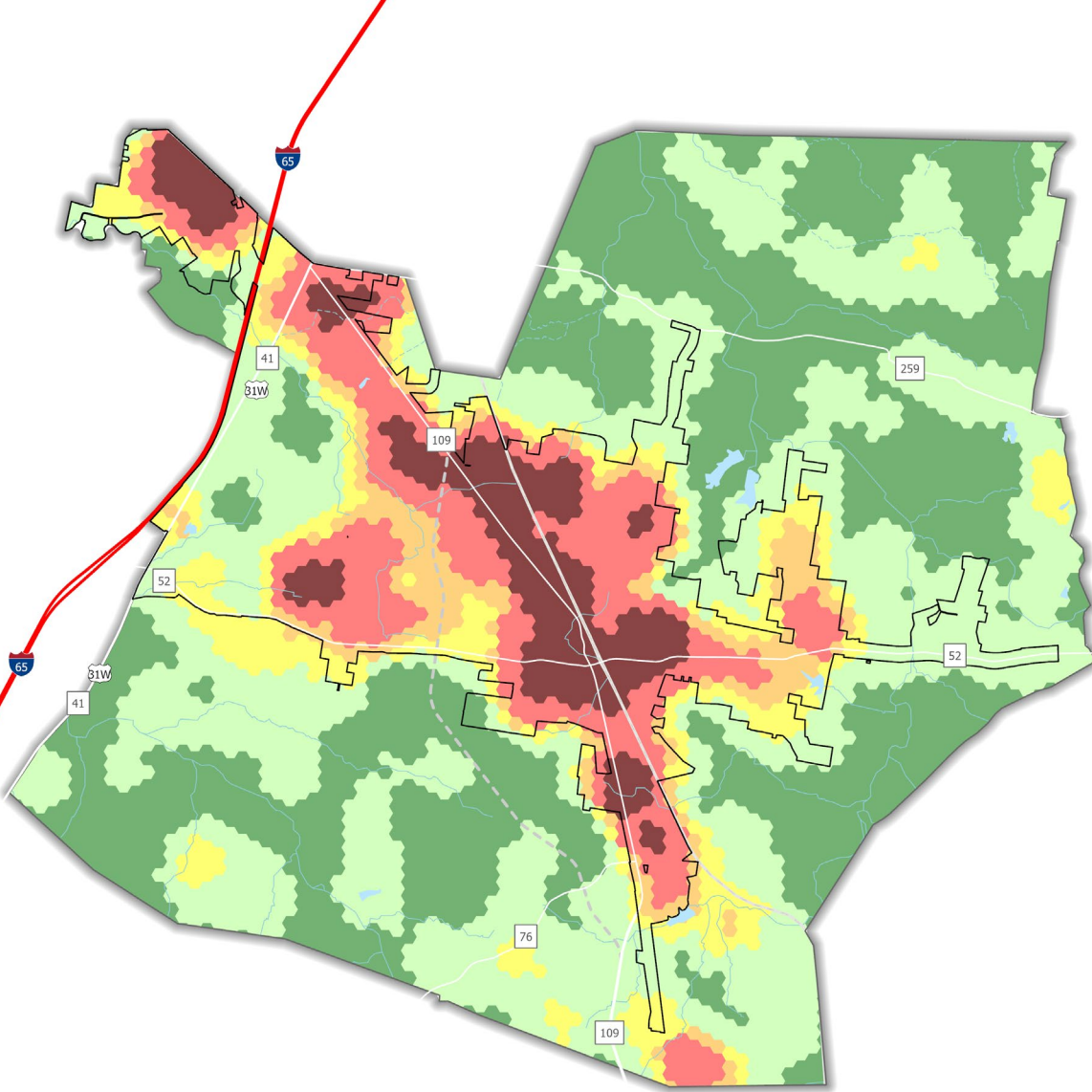
100 to 500

500 to 1,000

1,000 to 1,500

1,500 to 3,000









More than 3,000



Impacts of a More Compact Scenario

Measure of Success	More Compact Scenario
Roadway Demand	12% better than trend
Flooding Risks	7% better than trend
Agricultural Land	33% better than trend
Other Open Space	40% better than trend

General Observations of Growth Scenarios

Measure of Success		Trending Scenario	More Dispersed	More Compact
Roadway Demand		51% higher	3% worse	12% better
Flooding Risks		87% higher	13% worse	7% better
Agricultural Land		68% lost	About the same	33% better
Other Open Space		84% lost	1% worse	40% better
Fiscal Impacts – Infrastructure Costs vs. Tax Revenue			-	+
Opportunities for Transit and Walkability			-	+
Opportunities for Larger Yards			+	-
Access to Parks and Amenities			-	+

It's your turn to
map your
community

What's Your Preferred Scenario?

