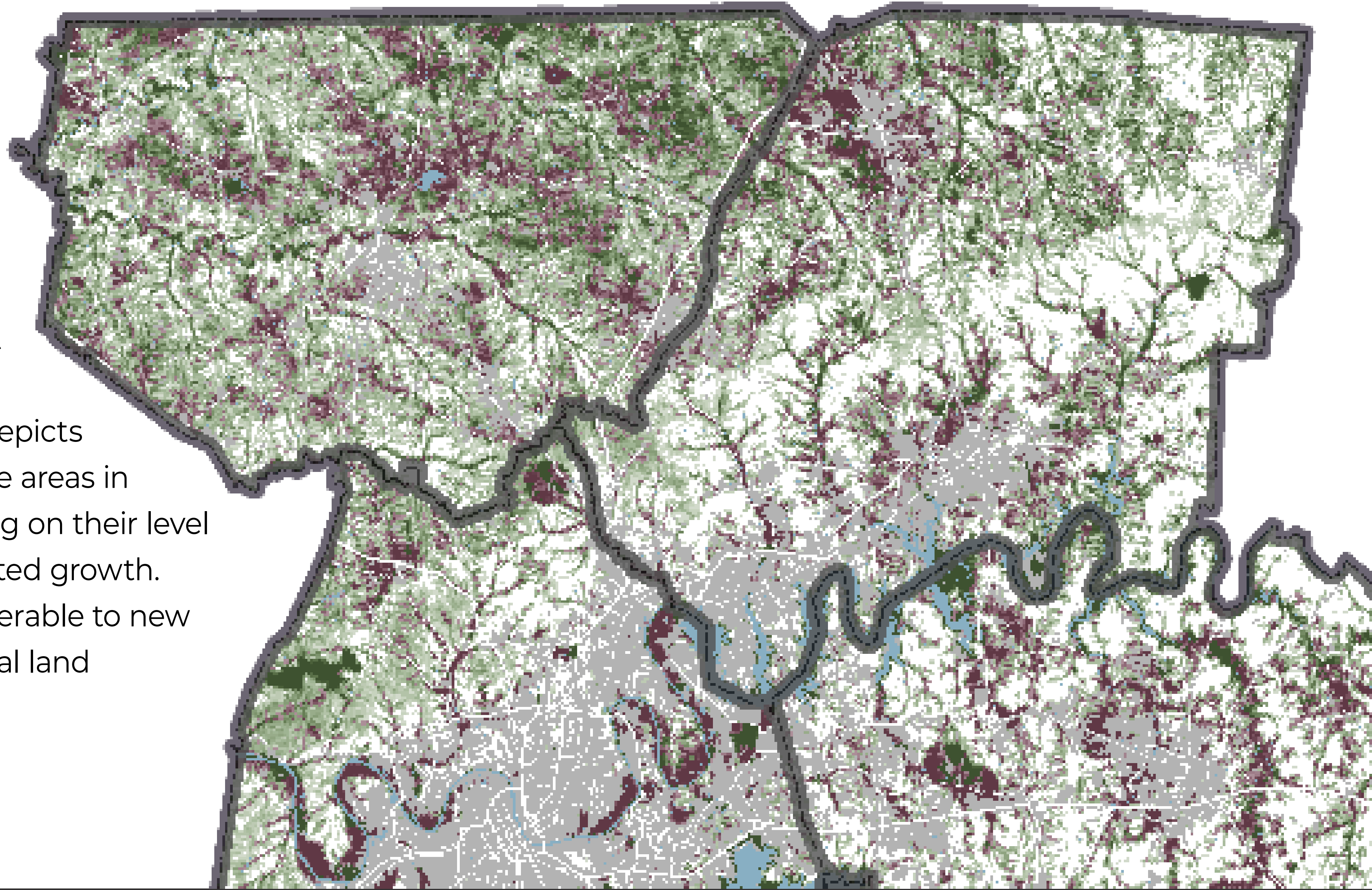


# 2045 OUTLOOK

Sumner and Robertson Counties are home to natural areas that are vulnerable to future development if population growth continues to sprawl across the landscape as it has in recent decades. These areas include steep slopes, floodplains, wetlands, rivers and streams, and other habitats that support the counties' biodiversity. This map depicts environmentally sensitive areas in green and red depending on their level of vulnerability to projected growth. Red areas are most vulnerable to new growth based on regional land development forecasts.



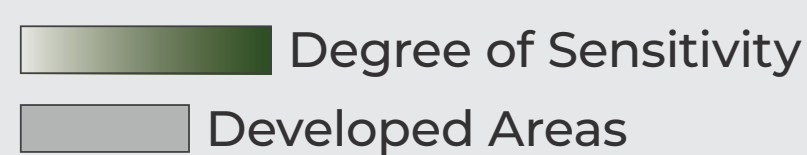
## Implications of Growth

### Impacts on Open Space and Natural Areas

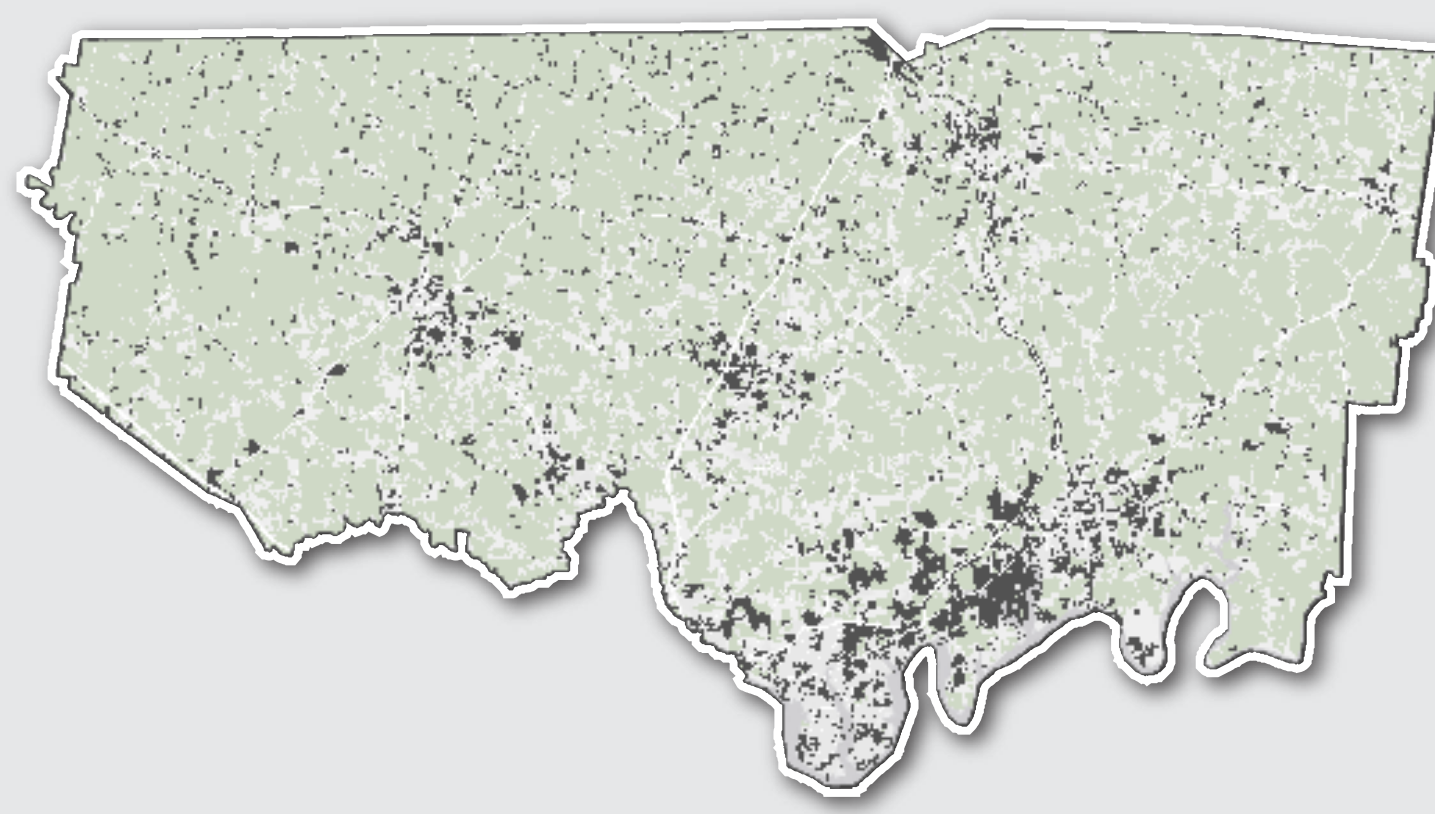
TODAY



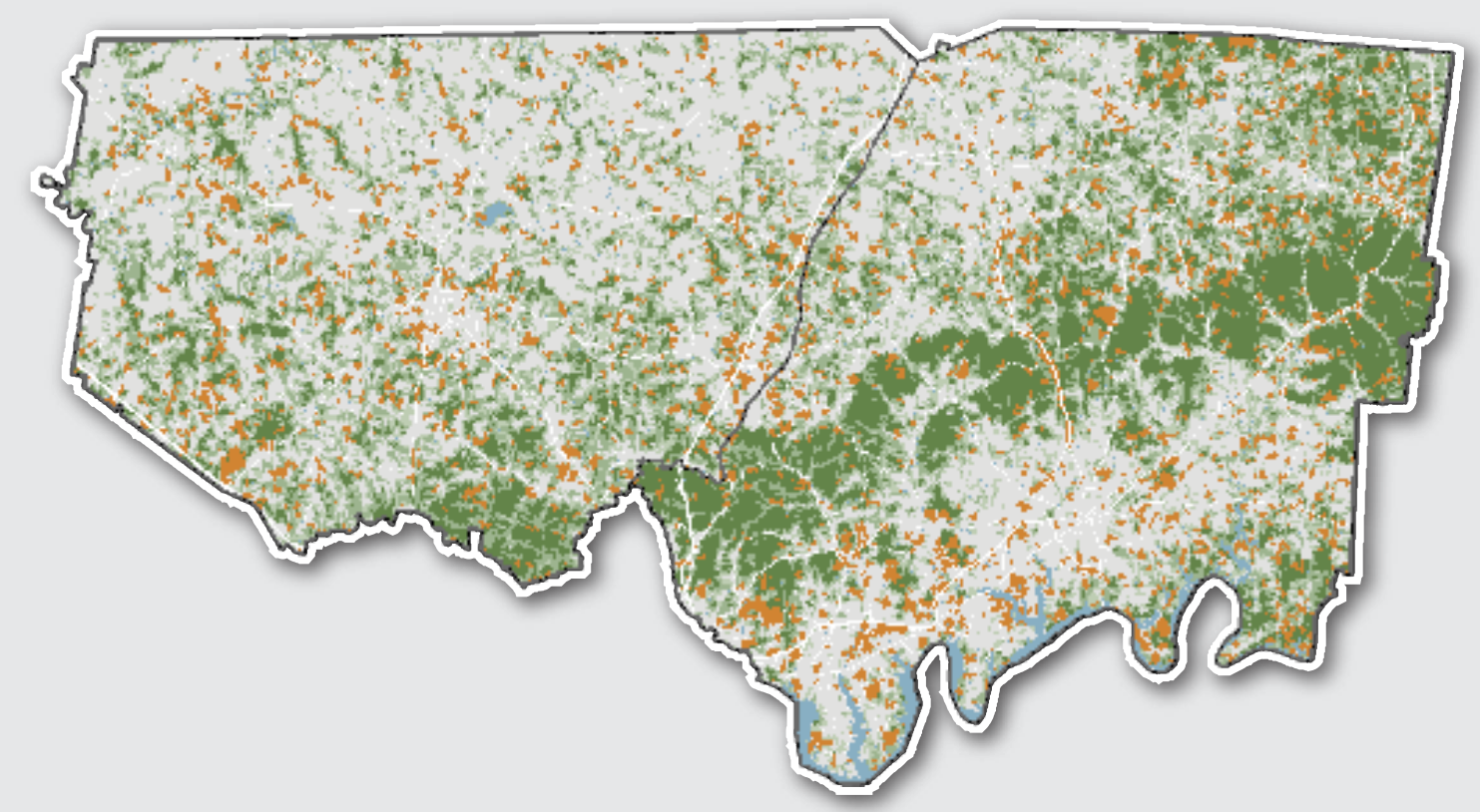
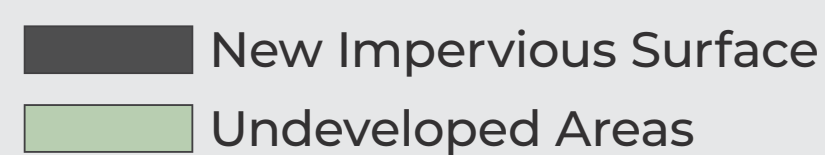
Environmentally Sensitive Areas



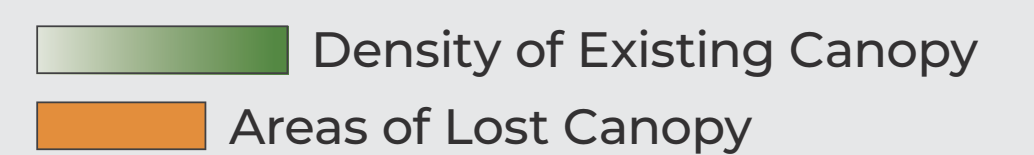
LAST 20 YEARS



Gains in Impervious Surface



Losses in Tree Canopy



FOREST AND SCRUBLAND

**45%**  of existing land consumed by 2045

AG AND GRASSLAND

**61%**  of existing land consumed by 2045

ALL OPEN SPACE

**293k**  acres of land consumed by 2045

Data sources for poster: National Land Cover Dataset; GNRC Land Use Forecasts and UrbanFootprint Model