

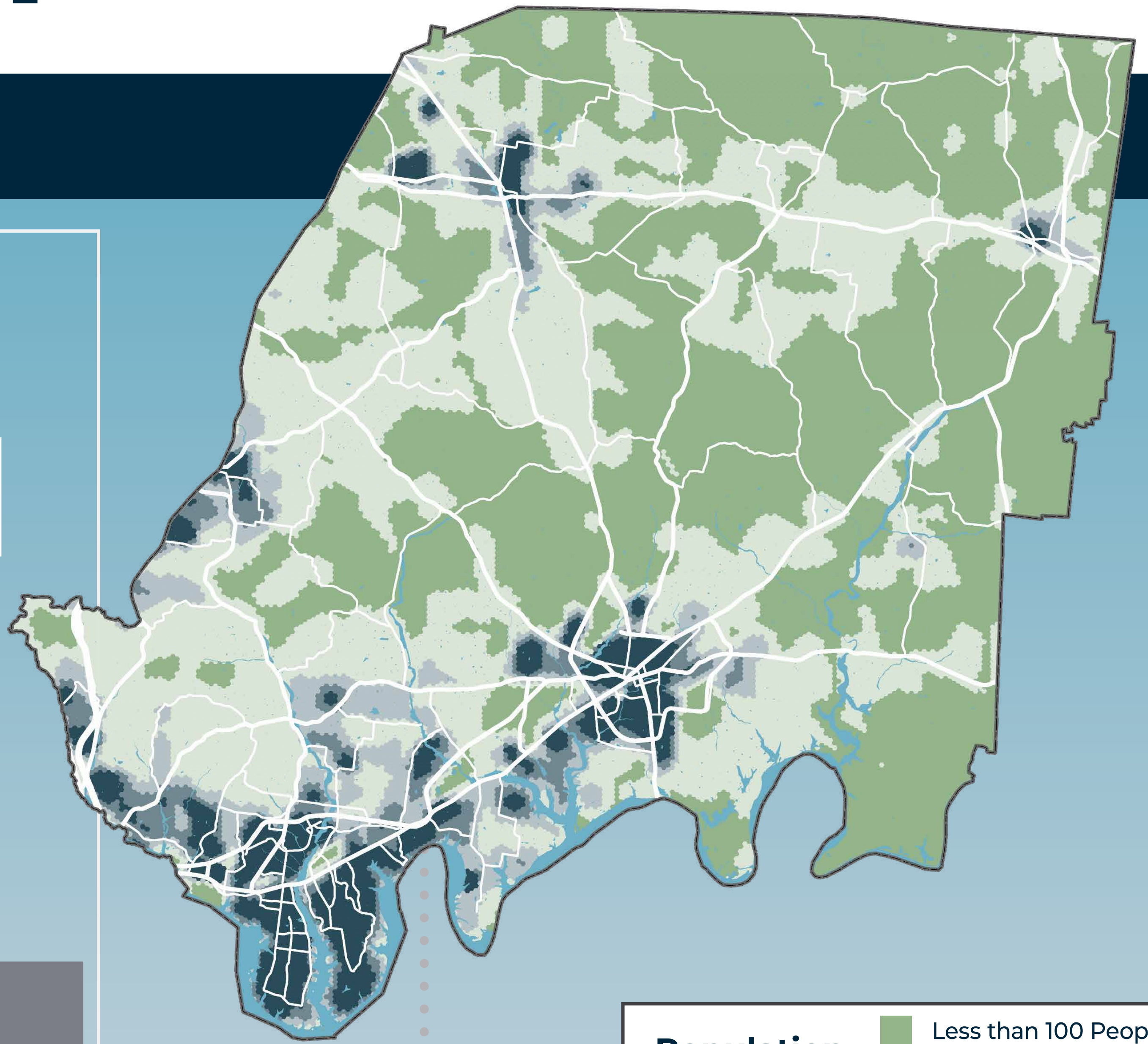
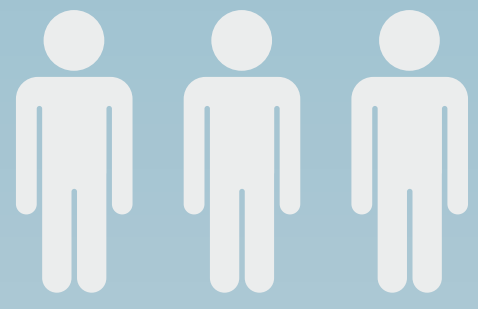
Population

AT A GLANCE

CURRENT POPULATION
OF SUMNER COUNTY

196,281

22% INCREASE
SINCE 2010



Population Per Square Mile (2020)

- Less than 100 People
- 100 to 499 People
- 500 to 999 People
- 1000 to 1499 People
- 1500 or More People

21%
Ethnic Minorities

18%
School Aged Children

16%
Senior Citizens

10%
Living below Poverty Level

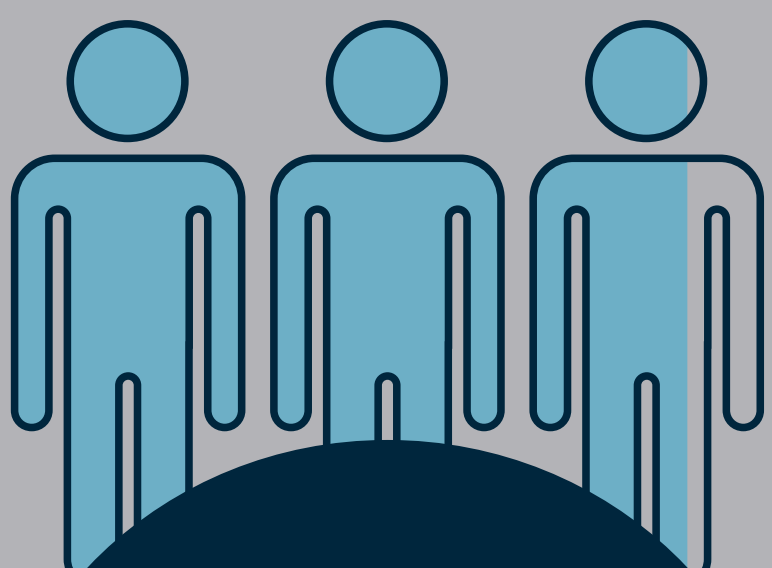
Data Source: 2016-2020 ACS 5-Year, 2010 U.S. Census, 2020 U.S. Census

297

Number of people gained per month between 2010 and 2020

Data Source: 2010 U.S. Census and 2020 U.S. Census

AVERAGE
HOUSEHOLD SIZE

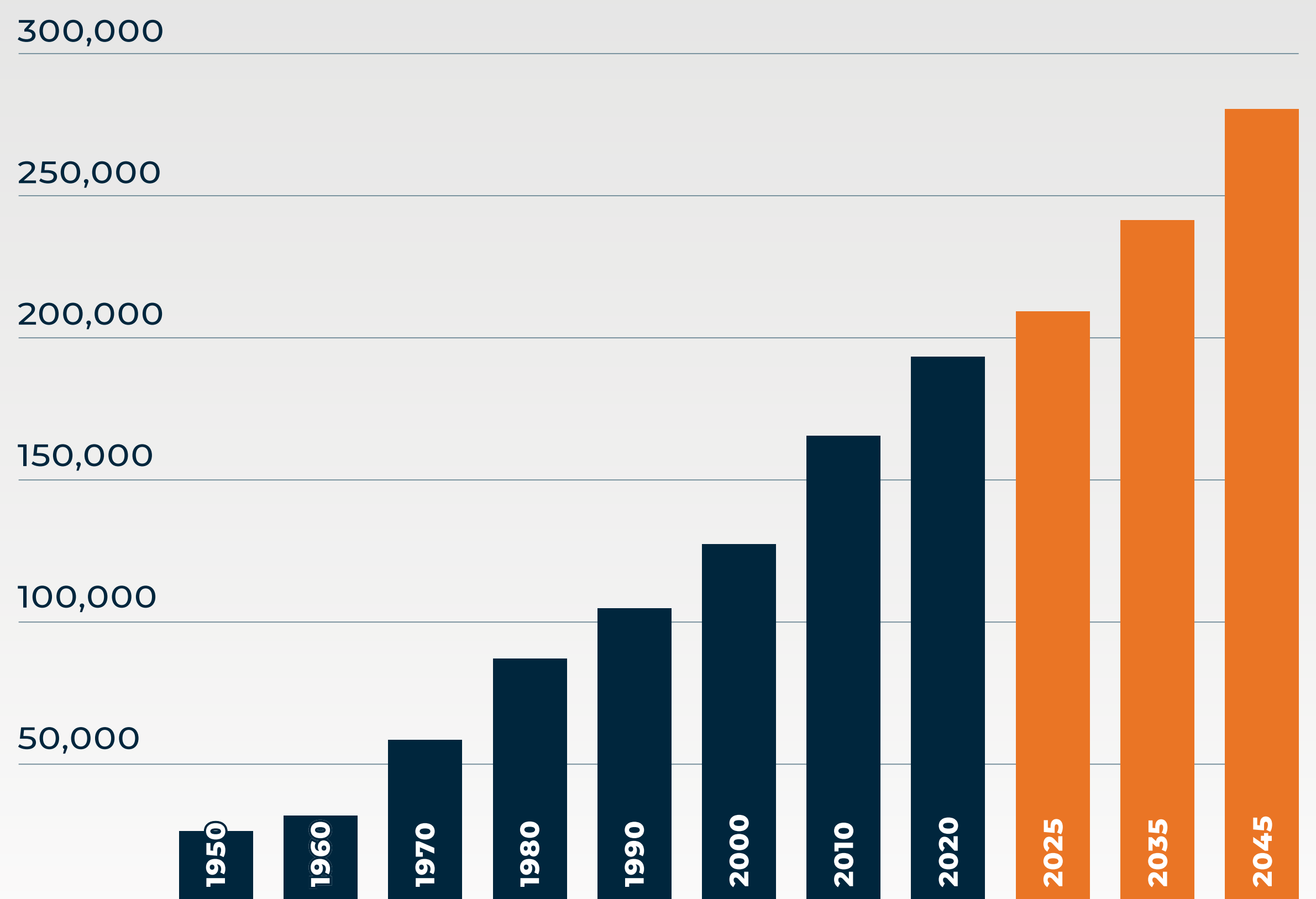


2.71

PEOPLE

Data Source: 2016-2020 ACS 5-Year

POPULATION GROWTH TREND



Data Source: U.S. Decennial Census; Woods & Poole Economics Forecast

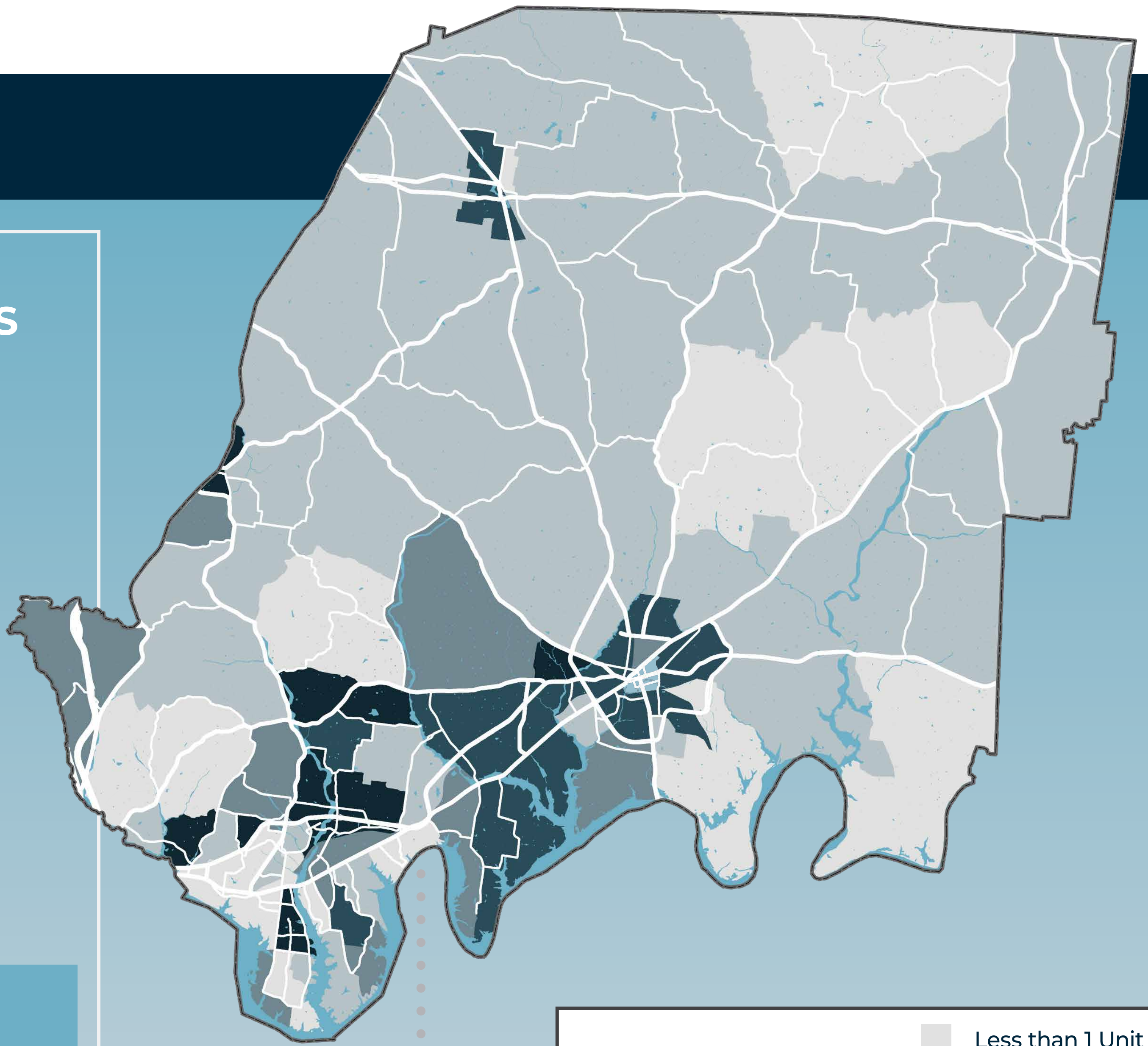
Housing

AT A GLANCE

NUMBER OF HOUSING UNITS
IN SUMNER COUNTY

73,422

15% INCREASE
SINCE 2010



**Net New Housing
Units Per Square
Mile, 2010 to 2020**

Less than 1 Unit
1 to 49 Units
50 to 99 Units
100 to 249 Units
250 or More Units

75%
Single Family
Detached Homes

16%
Multi Family
Homes

6% Mobile
Homes

3% Single Family
Attached Homes

78

**Net new housing units
gained per month
between 2010 and 2020**

Data Source: 2020 U.S. Census

Data Source: 2016-2020 ACS 5-Year, 2010 U.S. Census, 2020 U.S. Census

Typical
Home Value in
Sumner County

\$443,051

(Zillow's July 2022 ZHVI)

\$108,108

**Annual Salary to
Afford Home**

Based on typical mortgage, property taxes, and utilities

\$69,878

**Countywide Median
Household Income**

Data Source: 2016-2020 ACS 5-Year

20%

**Homeowners are
Cost Burdened**

2016-2020 ACS 5-Year

41%

**Renters are
Cost Burdened**

2016-2020 ACS 5-Year

Cost burdened households spend 30% or more of gross income on housing.

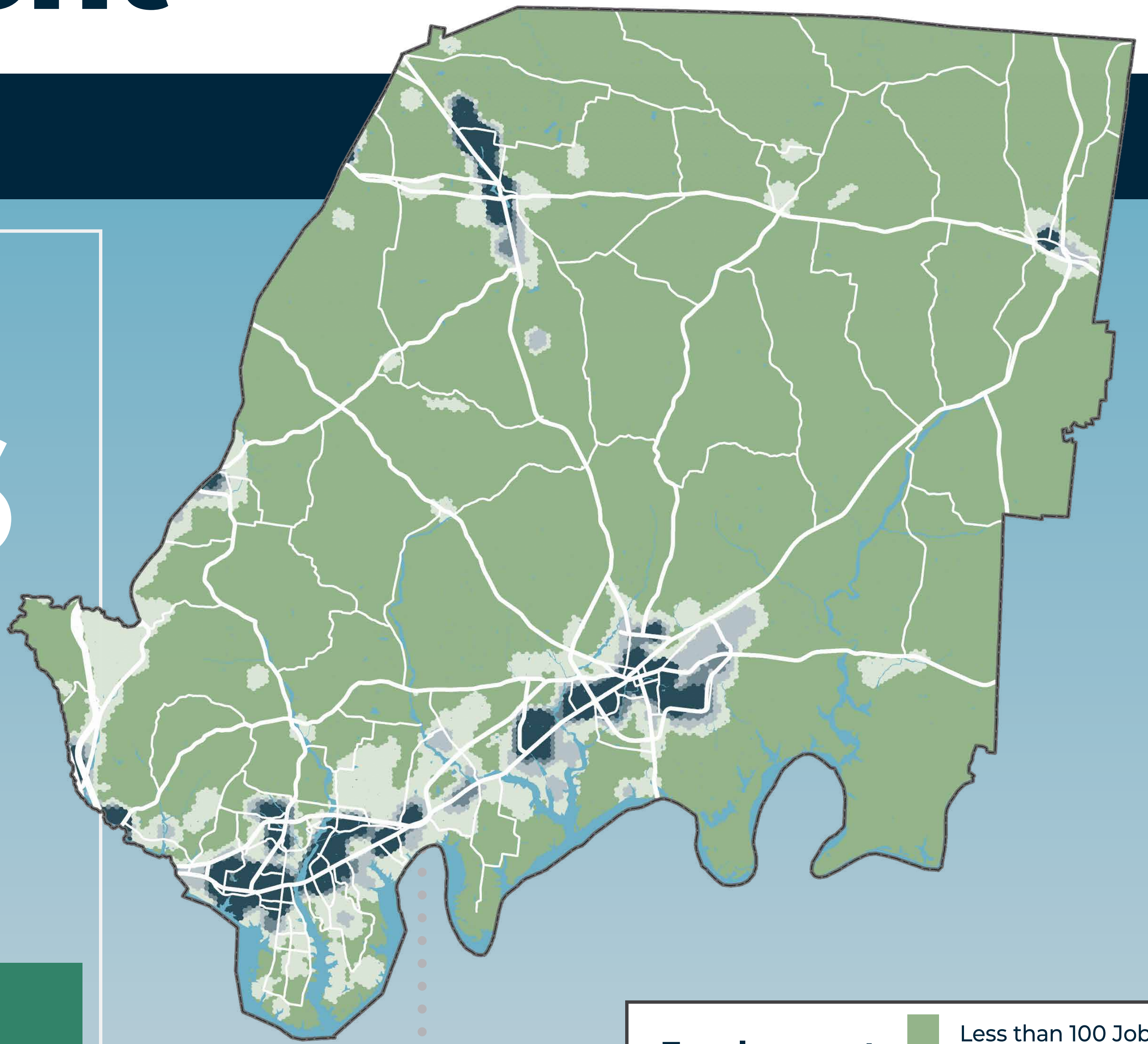
Employment

AT A GLANCE

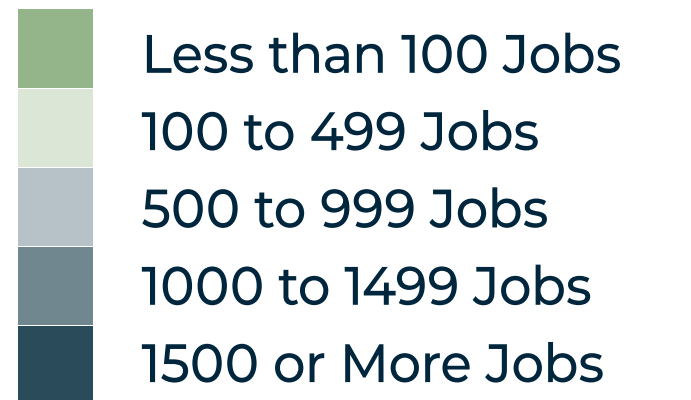
CURRENT EMPLOYMENT
IN SUMNER COUNTY

88,436

36% INCREASE
SINCE 2010



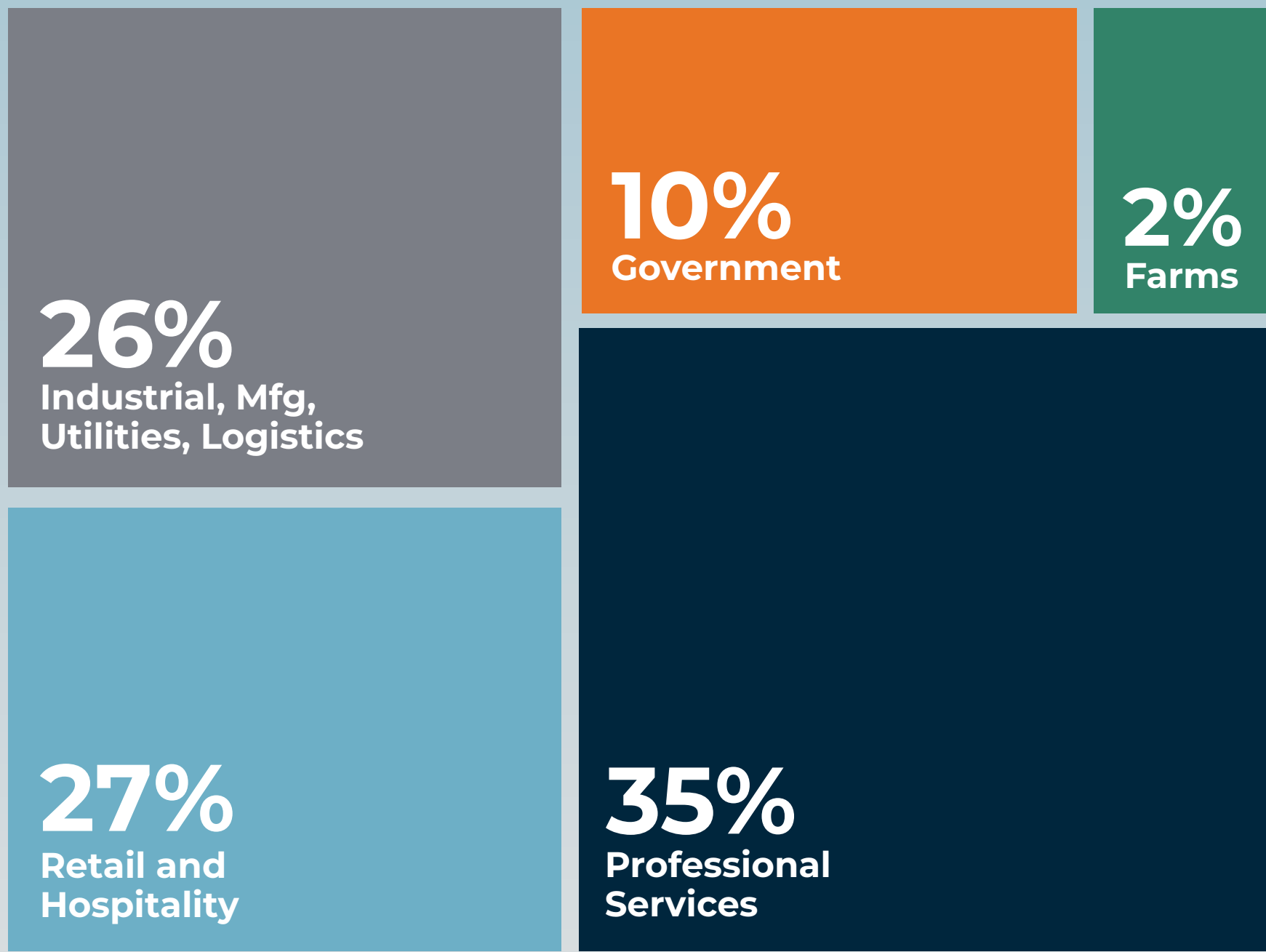
**Employment
Per Square
Mile (2020)**



195

**Number of jobs gained
per month between
2010 and 2020**

Data Source: U.S. Bureau of Economic Analysis, 2020



Data Sources: U.S. Bureau of Economic Analysis, 2020

Type of Workers



26%
Blue Collar*



30%
White Collar*

*will not add to 100% since not all jobs are identifiable as blue or white collar

Data Source: U.S. Bureau of Economic Analysis, 2020

Top Five Employers

	COMPANY / ORGANIZATION	NUMBER OF EMPLOYEES
1	Sumner County Board of Education	4,191
2	Sumner County Government	2,211
3	Xtend Healthcare, LLC	928
4	Sumner Regional Medical Center	875
5	Gap, Inc.	815

Data Source: TN Department of Economic & Community Development

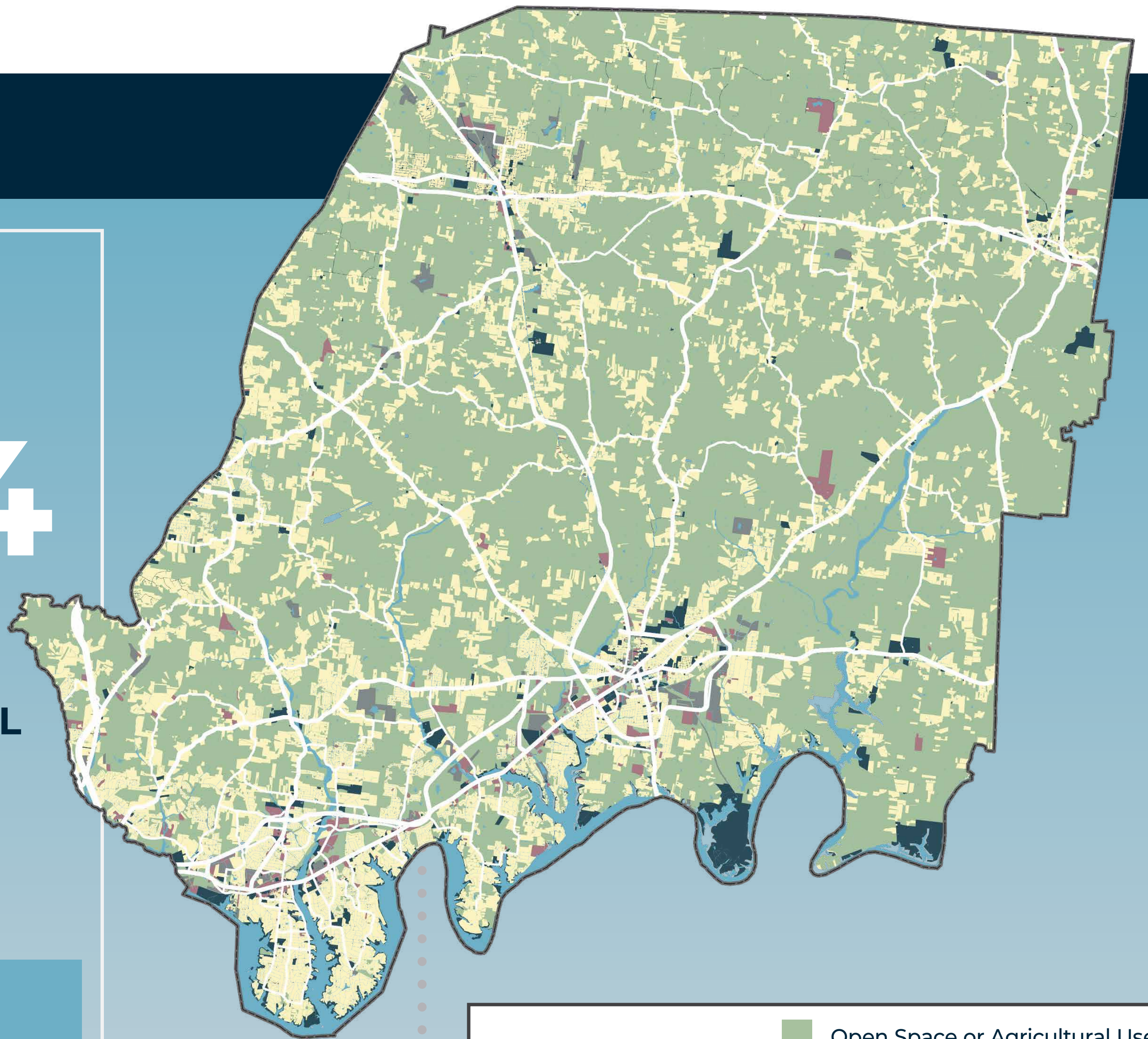
Land Use

AT A GLANCE

TOTAL ACRES OF LAND
IN SUMNER COUNTY

338,854

74,033 INDIVIDUAL
PARCELS



**Predominant
Land Use (2017)**

- Open Space or Agricultural Use
- Residential Use
- Commercial, Office or Mixed Use
- Industrial or Utility Use
- Public or Institutional Use

18

**Average number of acres
of impervious cover
gained per month
between 2010 and 2019**

Data Source: Greater Nashville Regional Council

70%
Open Spaces, or
Agricultural Use

25%
Residential Use

3% Public or
Institutional

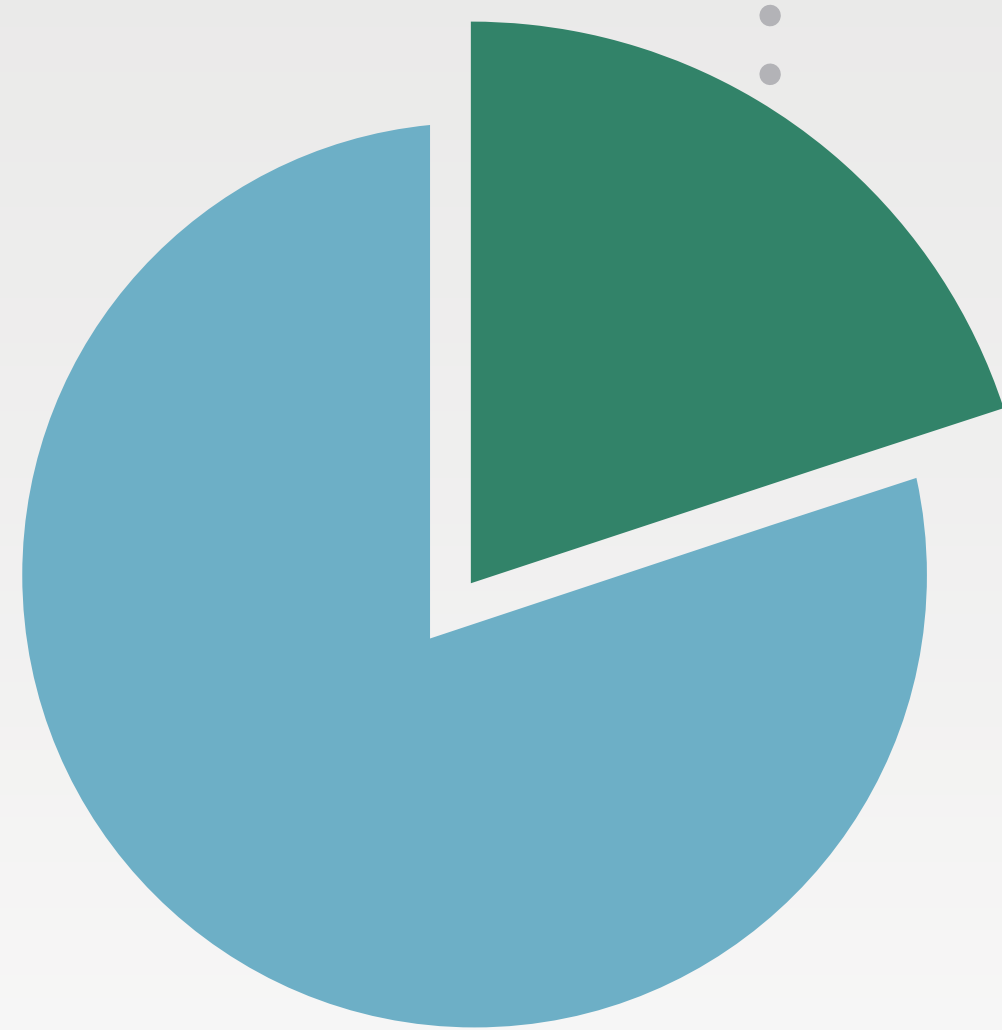
2% Commercial

1% Industrial

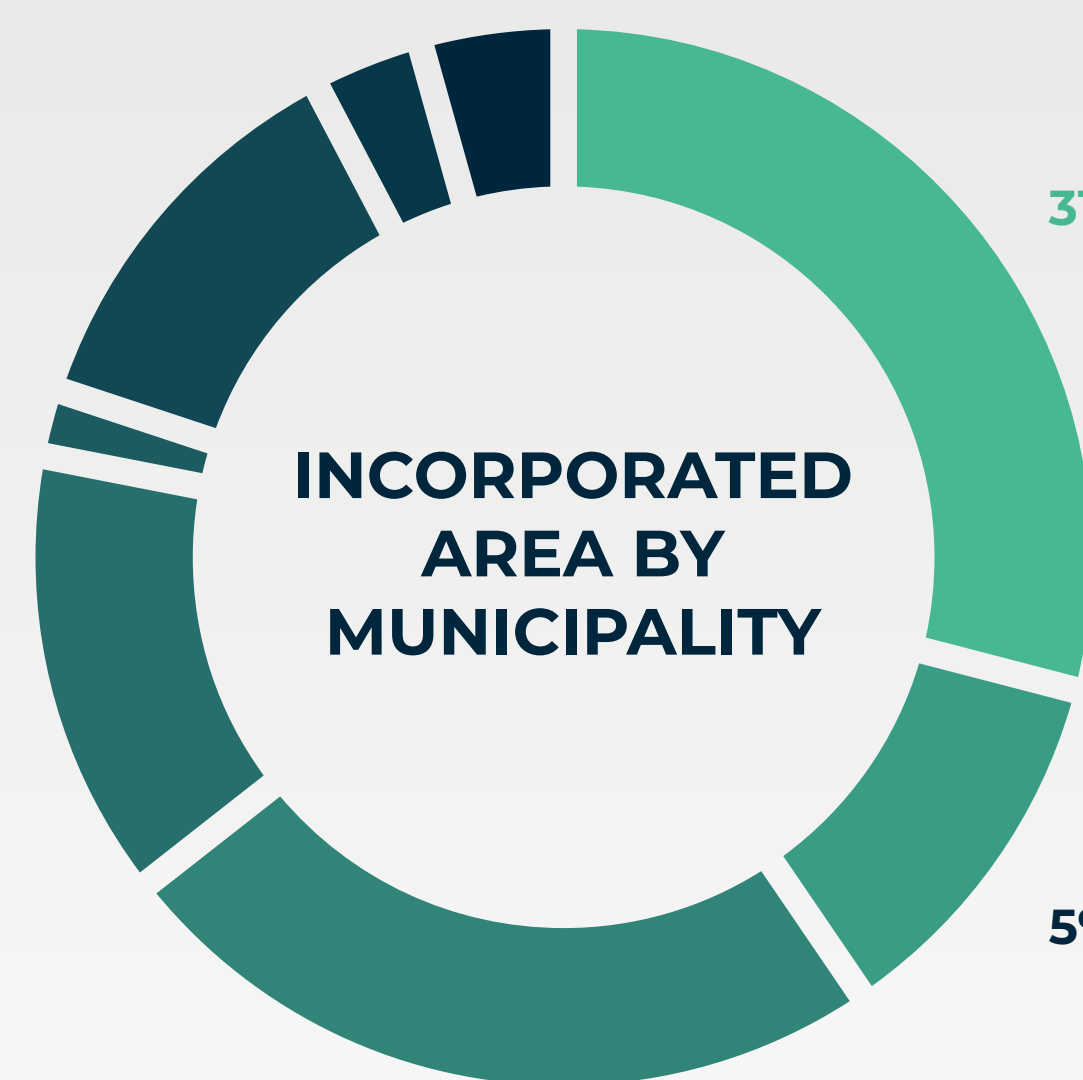
Data Source: County Property Assessor and ACS TIGER (2020)

Land Area by Jurisdiction

80%
Unincorporated
Area



20%
Incorporated
Area



- 31%** Gallatin
- 7%** Goodlettsville
- 30%** Hendersonville
- 11%** Millersville
- 1%** Mitchellville
- 12%** Portland
- 4%** White House
- 5%** Westmoreland

Data Source: ACS TIGER (2020) and GNRC Corporate Limits